

VOR/DME BRL 111.4 Chan 51	APP CRS 253°	Rwy ldg TDZE Apt Elev	N/A N/A 722
---	------------------------	-----------------------------	--

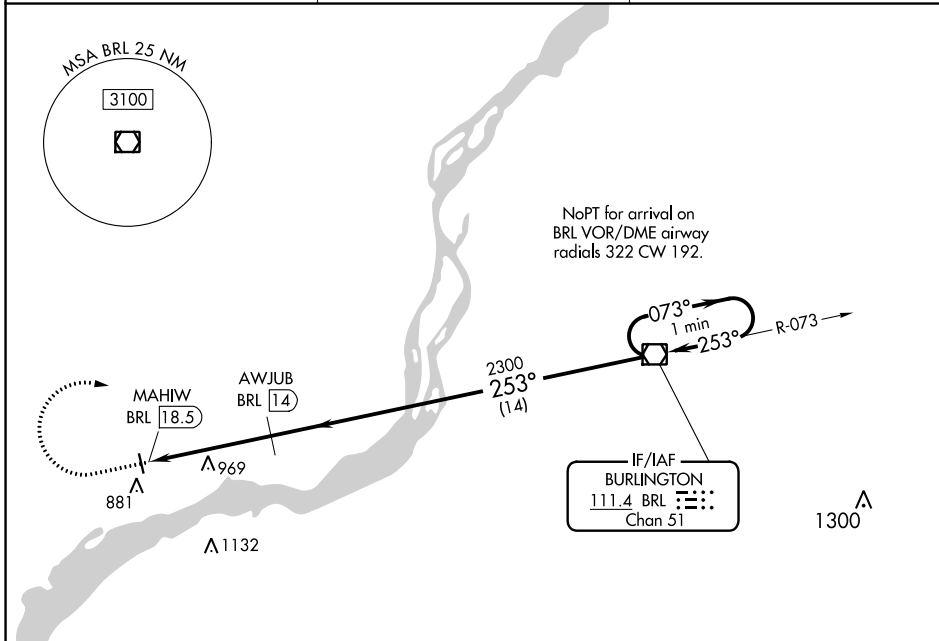
VOR/DME-A

FORT MADISON MUNI (F5W)

⚠ When local altimeter not received, use Burlington altimeter setting; increase all MDA 40 feet and Circling Cat D visibility ¼ SM. Visibility reduction by helicopters NA.

MISSED APPROACH: Climb to 2300 then climbing right turn to 2600 direct BRL VOR/DME and hold.

AWOS-3 120.925	CHICAGO CENTER 135.6 316.1	UNICOM 122.8 (CTAF) Ⓛ
--------------------------	--------------------------------------	--

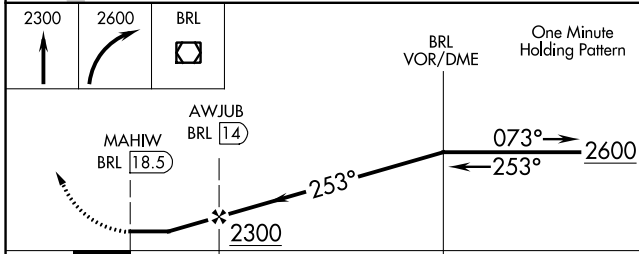
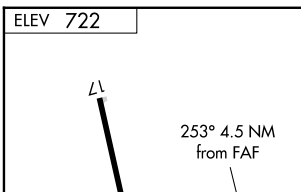


NoPT for arrival on BRL VOR/DME airway radials 322 CW 192.

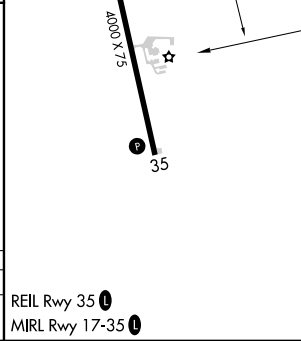
IF/IAF
BURLINGTON
111.4 BRL Chan 51

NC-3, 05 SEP 2024 to 03 OCT 2024

NC-3, 05 SEP 2024 to 03 OCT 2024



CATEGORY	A	B	C	D
ⓐ CIRCLING	1220-1	498 (500-1)	1220-1½ 498 (500-1½)	1500-2½ 778 (800-2½)



REIL Rwy 35 **Ⓛ**
MIRL Rwy 17-35 **Ⓛ**