

WAA5 CH <b>82106</b> <b>W12A</b>	APP CRS <b>125°</b>	Rwy Idg <b>7221</b> TDZE <b>1183</b> Apt Elev <b>1183</b>
--	------------------------	---

# RNAV (GPS) RWY 12

SOUTHWEST MINNESOTA RGNL MARSHALL/RYAN FLD (MML)

RNP APCH-GPS

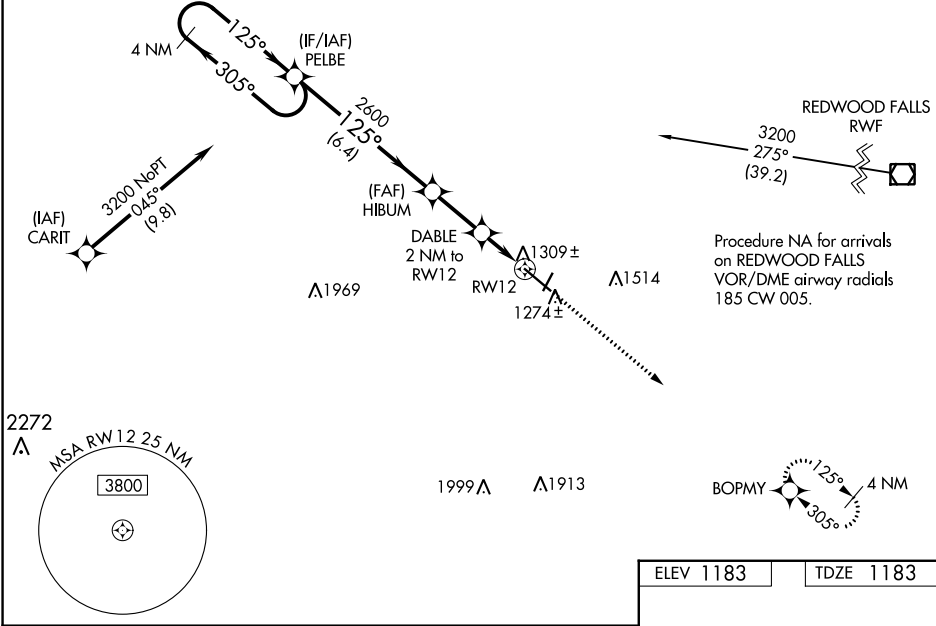
**⚠** Baro-VNAV and VDP NA when using Tracy Muni altimeter setting. For uncompensated Baro-VNAV systems, LNAV/VNAV NA below -17°C or above 36°C. When local altimeter setting not received, use Tracy Muni altimeter setting and increase LPV DA to 1441 feet; LNAV/VNAV DA to 1548 and all Cats visibilities 1/8 SM; increase all MDA 60 feet, LNAV visibility Cat C/D 1/8 SM and Circling visibility Cat C/D 1/4 SM. For inop ALS, increase LNAV/VNAV all Cats visibility to 3/8 SM, and LNAV Cat C/D visibility to 1 SM. For inop ALS when using Tracy Muni altimeter setting, increase LNAV/VNAV all Cats visibility to 1 SM.

MALSRS



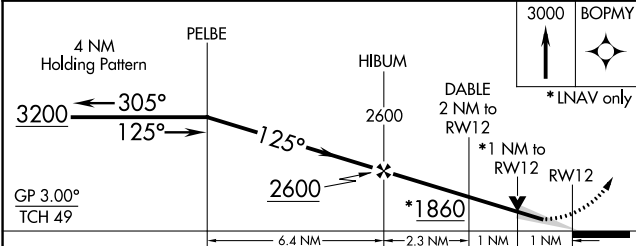
**MISSED APPROACH:**  
Climb to 3000 direct BOPMY and hold.

AWOS-3PT <b>120.150</b>	MINNEAPOLIS CENTER <b>127.1 290.2</b>	GCO <b>121.725</b>	UNICOM <b>122.8 (CTAF)</b>
----------------------------	--	-----------------------	-------------------------------



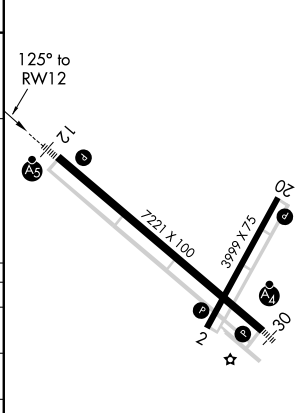
NC-1, 05 SEP 2024 to 03 OCT 2024

NC-1, 05 SEP 2024 to 03 OCT 2024



ELEV 1183	TDZE 1183
-----------	-----------

CATEGORY	A	B	C	D
LPV DA		1383-1/2	200 (200-1/2)	
LNAV/VNAV DA		1490-1/2	307 (400-1/2)	
LNAV MDA	1560-1/2	377 (400-1/2)	1560-5/8	377 (400-5/8)
CIRCLING	1640-1	457 (500-1)	1820-1 3/4	1840-2
			637 (700-1 3/4)	657 (700-2)



HIRL Rwy 12-30  
REIL Rws 2 and 20  
MIRL Rwy 2-20

# RNAV (GPS) RWY 12