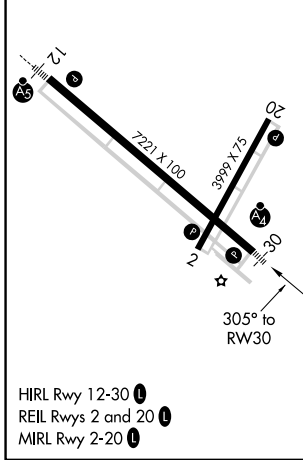
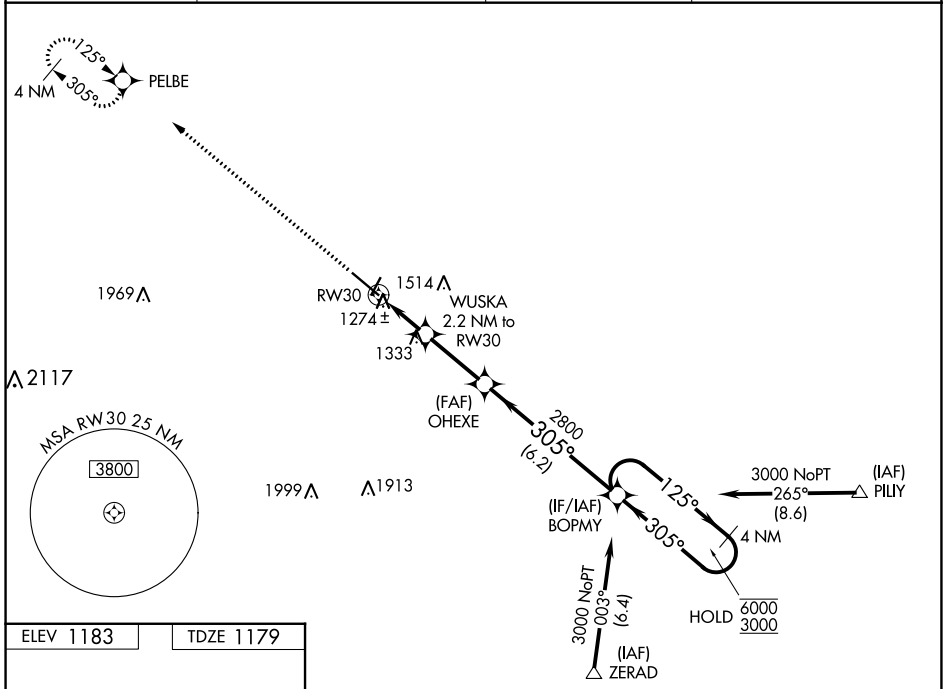


WAAS CH 86321 W30A	APP CRS 305°	Rwy Idg 7221 TDZE 1179 Apt Elev 1183
--	------------------------	---

RNAV (GPS) RWY 30

SOUTHWEST MINNESOTA RGNL MARSHALL/RYAN FLD (MML)

RNP APCH - GPS		MALSF	MISSED APPROACH: Climb to 3200 direct PELBE and hold.
AWOS-3PT 120.150	MINNEAPOLIS CENTER 127.1 290.2	GCO 121.725	UNICOM 122.8 (CTAF) 0



ELEV 1183	TDZE 1179	3200 PELBE VGSi and RNAV glidepath not coincident (VGSi Angle 3.00/TCH 32).			
		OHEXE		BOPMY 4 NM Holding Pattern	
WUSKA 2.2 NM to RW30		2800		125° → 6000	
RW30		1900		← 305° 3000	
1.2 NM		1 NM		2.8 NM	
1.2 NM		1 NM		6.2 NM	
CATEGORY	A	B	C	D	
LPV DA	1429-¾		250 (300-¾)		
LNAV/VNAV DA	1464-¾		285 (300-¾)		
LNAV MDA	1600-¾		421 (500-¾)		1600-1 421 (500-1)
<input checked="" type="checkbox"/> CIRCLING	1640-1		457 (500-1)		1820-1¾ 637 (700-1¾) 1840-2 657 (700-2)

RNAV (GPS) RWY 30

NC-1, 05 SEP 2024 to 03 OCT 2024

NC-1, 05 SEP 2024 to 03 OCT 2024