

VOR/DME MML 111.0 Chan 47	APP CRS 130°	Rwy Idg TDZE 1183 Apt Elev 1183	7221
---	------------------------	---	-------------

VOR RWY 12

SOUTHWEST MINNESOTA RGNL MARSHALL/RYAN FLD (MML)

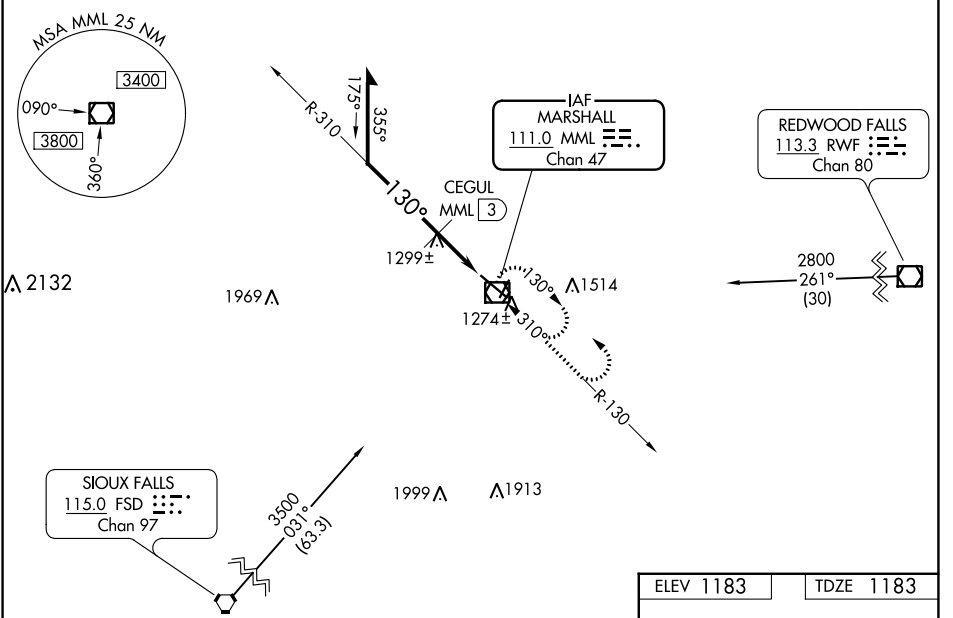
NA For inop ALS, increase S-12 Cat C/D visibilities to 1 1/8 SM, CEGUL fix minimums: S-12 Cat C/D visibility to 1 SM. For inop ALS when using Tracy altimeter setting increase S-12 Cat C/D visibilities to 1 3/4 SM. When local altimeter setting not received, use Tracy Muni altimeter setting and increase all MDAs 60 feet, S-12 Cat C/D visibility 1/8; Circling Cat C/D visibility 1/4 SM; CEGUL fix minimums: increase Circling C/D visibility 1/4 SM. VDP NA when using Tracy Muni altimeter setting.

MALS



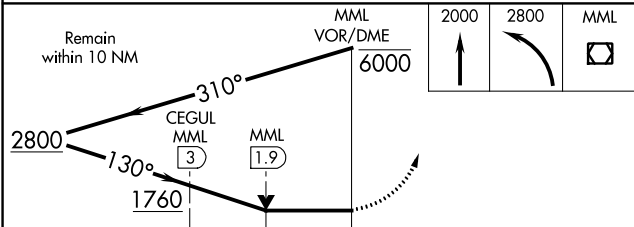
MISSED APPROACH: Climb to 2000, then climbing left turn to 2800 direct MML VOR/DME and hold.

AWOS-3PT 120.150	MINNEAPOLIS CENTER 127.1 290.2	GCO 121.725	UNICOM 122.8 (CTAF)
----------------------------	--	-----------------------	-------------------------------



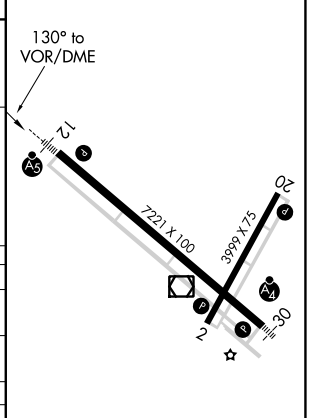
NC-1, 05 SEP 2024 to 03 OCT 2024

NC-1, 05 SEP 2024 to 03 OCT 2024



ELEV 1183	TDZE 1183
-----------	-----------

CATEGORY	A	B	C	D
S-12	1760-1/2	577 (600-1/2)	1760-1 1/4	577 (600-1 1/4)
CIRCLING	1760-1	577 (600-1)	1820-1 3/4 637 (700-1 3/4)	1840-2 657 (700-2)
CEGUL FIX MINIMUMS				
S-12	1560-1/2	377 (400-1/2)	1560-3/4	377 (400-3/4)
CIRCLING	1640-1	457 (500-1)	1820-1 3/4 637 (700-1 3/4)	1840-2 657 (700-2)



HIRL Rwy 12-30
REIL Rws 2 and 20
MIRL Rwy 2-20

VOR RWY 12