

TIFFIN, OHIO

AL-5645 (FAA)

23054

WAAS CH <b>90528</b> <b>W24A</b>	APP CRS <b>242°</b>	Rwy Idg TDZE Apt Elev	<b>4000</b> <b>785</b> <b>786</b>
--	------------------------	-----------------------------	---

# RNAV (GPS) RWY 24

SENECA COUNTY (16G)

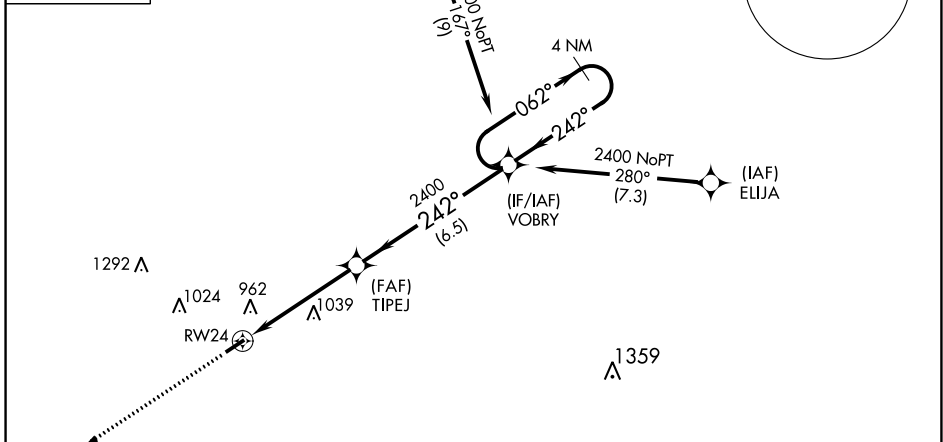
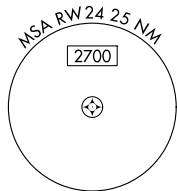
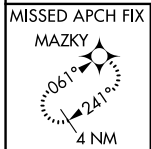
RNP APCH.

**▽** Circling to Rwy 24 NA at night. Baro-VNAV NA when using Findlay altimeter setting. Rwy 24 helicopter visibility reduction below  $\frac{3}{4}$  SM NA. For uncompensated Baro-VNAV systems, LNAV/VNAV NA below -16°C or above 54°C. When local altimeter setting not received, use Findlay altimeter setting and increase all DA/MDA 60 feet, and increase LPV, LNAV/VNAV all Cats visibility  $\frac{1}{8}$  SM, increase LNAV and Circling Cat C visibility  $\frac{1}{4}$  mile.

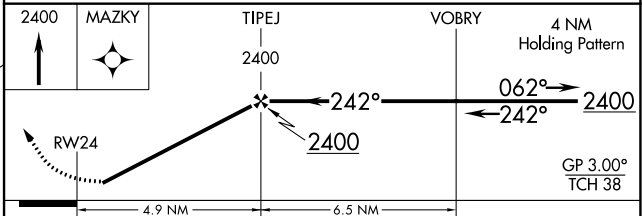
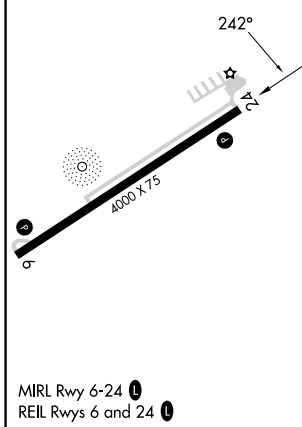
**△ NA**

MISSED APPROACH: Climb to 2400 direct MAZKY and hold.

AWOS-3 <b>127.175</b>	FDY ASOS <b>132.85</b>	TOLEDO APP CON <b>120.8 317.55</b>	UNICOM <b>123.0 (CTAF) 0</b>
--------------------------	---------------------------	---------------------------------------	---------------------------------



ELEV	<b>786</b>	TDZE	<b>785</b>
------	------------	------	------------



CATEGORY	A	B	C	D
LPV DA	1058-1 273 (300-1)			NA
LNAV/VNAV DA	1063-1 278 (300-1)			NA
LNAV MDA	1280-1	495 (500-1)	1280-1 $\frac{3}{8}$ 495 (500-1 $\frac{3}{8}$ )	NA
CIRCLING	1280-1	494 (500-1)	1340-1 $\frac{1}{2}$ 554 (600-1 $\frac{1}{2}$ )	NA

TIFFIN, OHIO  
Amdt 1D 27JAN22

41°06'N-83°13'W

# RNAV (GPS) RWY 24

EC-2, 05 SEP 2024 to 03 OCT 2024

EC-2, 05 SEP 2024 to 03 OCT 2024