

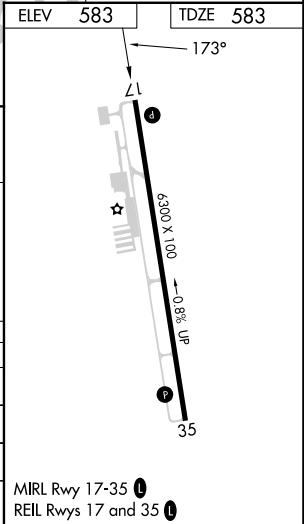
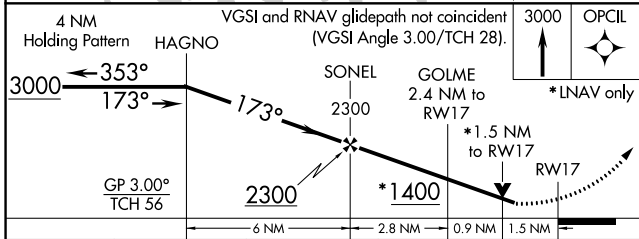
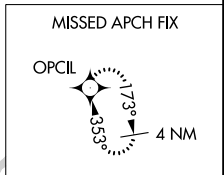
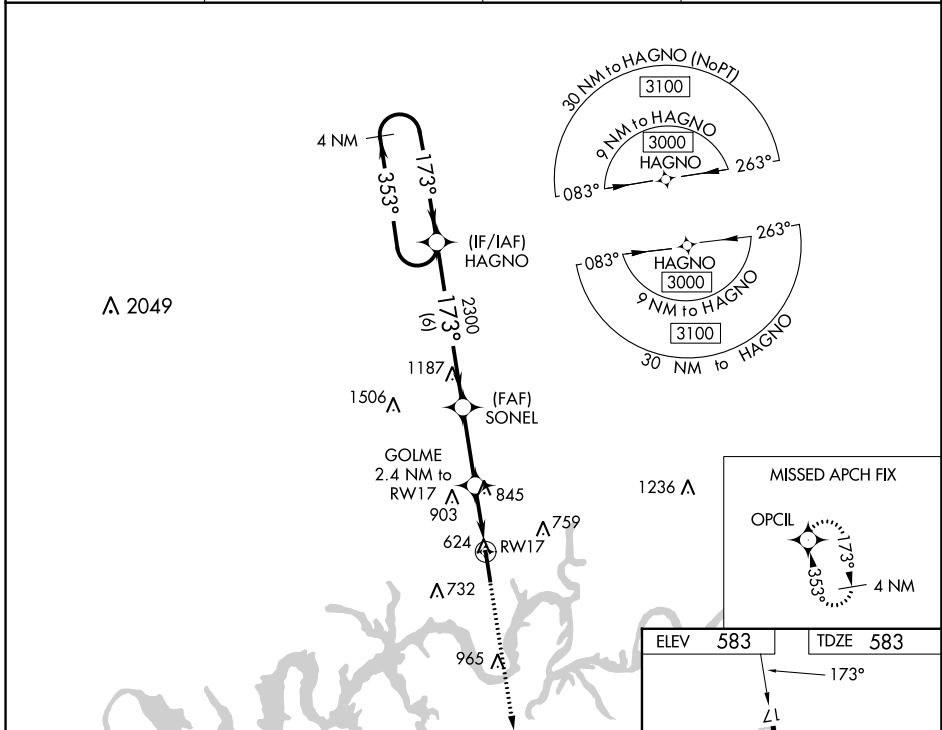
WAAS CH <b>70725</b> <b>W17A</b>	APP CRS <b>173°</b>	Rwy Idg TDZE Apt Elev	<b>6300</b> <b>583</b> <b>583</b>
--	------------------------	-----------------------------	---

# RNAV (GPS) RWY 17

MUSIC CITY EXEC (XNX)

RNP APCH.		MISSED APPROACH: Climb to 3000 direct OPCIL and hold.	
<b>▽</b> <b>▲</b>	For uncompensated Baro-VNAV systems, LNAV/VNAV NA below -16°C or above 54°C. Rwy 17 helicopter visibility reduction below 3/4 SM NA.		

AWOS-3 <b>132.725</b>	NASHVILLE APP CON <b>118.4 360.7</b>	GCO <b>135.075</b>	UNICOM <b>123.05 (CTAF) 0</b>
--------------------------	---	-----------------------	----------------------------------



CATEGORY	A	B	C	D
LPV DA		1069-1 <sup>3</sup> / <sub>8</sub>	486 (500-1 <sup>3</sup> / <sub>8</sub> )	
LNAV/VNAV DA		1075-1 <sup>3</sup> / <sub>8</sub>	492 (500-1 <sup>3</sup> / <sub>8</sub> )	
LNAV MDA	1100-1	517 (600-1)	1100-1 <sup>3</sup> / <sub>8</sub>	517 (600-1 <sup>3</sup> / <sub>8</sub> )
<b>C</b> CIRCLING	1100-1 517 (600-1)	1120-1 537 (600-1)	1240-1 <sup>3</sup> / <sub>4</sub> 657 (700-1 <sup>3</sup> / <sub>4</sub> )	1280-2 <sup>1</sup> / <sub>4</sub> 697 (700-2 <sup>1</sup> / <sub>4</sub> )

MIRL Rwy 17-35 0  
REIL Rwy 17 and 35 0

SE-1, 05 SEP 2024 to 03 OCT 2024

SE-1, 05 SEP 2024 to 03 OCT 2024