

VORTAC BNA	APP CRS	Rwy Idg	N/A
114.1	045°	TDZE	N/A
Chan 88		Apt Elev	583

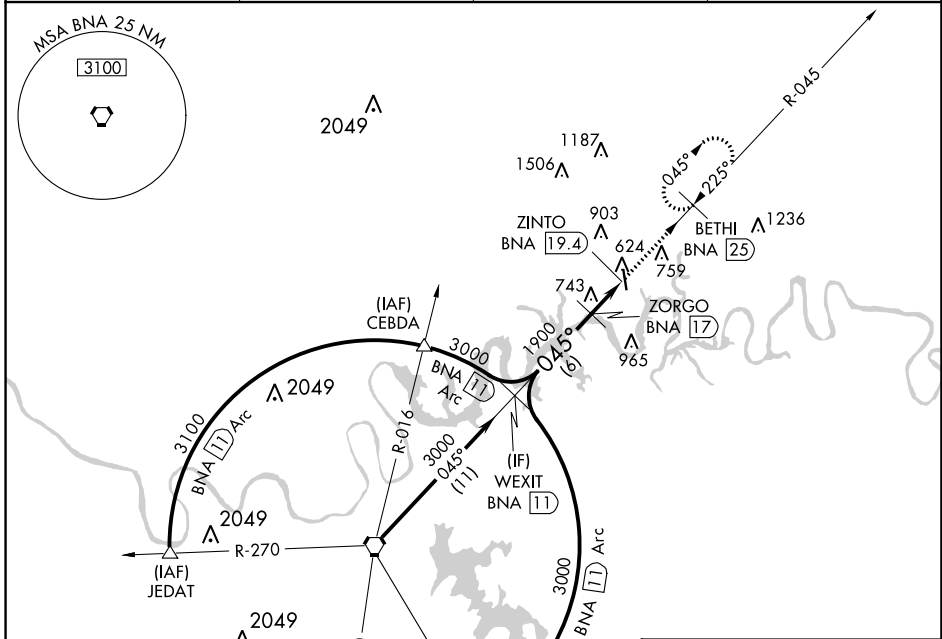
VOR-A
MUSIC CITY EXEC (X.N.X)

DME required.

When local altimeter setting not received, use Nashville Intl altimeter setting and increase all MDA 60 feet, increase Cat C/D visibility 1/4 mile.

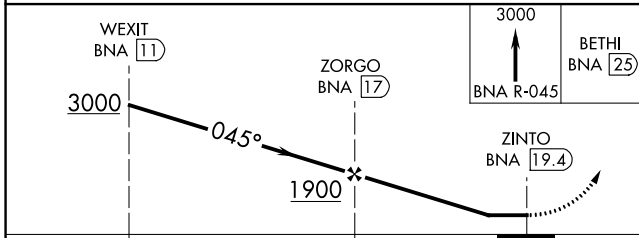
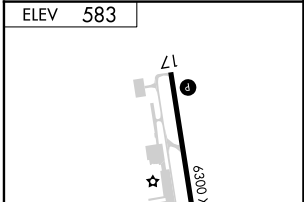
MISSED APPROACH: Climb to 3000 on BNA VORTAC R-045 to BETHI/25 DME and hold, continue climb-in-hold to 3000.

AWOS-3 132.725	NASHVILLE APP CON 118.4 360.7	GCO 135.075	UNICOM 123.05 (CTAF) 0
--------------------------	---	-----------------------	---



Procedure NA for arrival on BNA VORTAC airway radials 016 CW 072.

IAF NASHVILLE
114.1 BNA
Chan 88



CATEGORY	A	B	C	D	MIRL Rwy 17-35 0	REIL Rwy 17 and 35 0
CIRCLING	1100-1 517 (600-1)	1120-1 537 (600-1)	1240-1 3/4 657 (700-1 3/4)	1280-2 1/4 697 (700-2 1/4)		

SE-1, 05 SEP 2024 to 03 OCT 2024

SE-1, 05 SEP 2024 to 03 OCT 2024