

WAAS CH 63219 W34A	APP CRS 340°	Rwy Idg TDZE 5000 586 Apt Elev 586
---------------------------------	------------------------	---

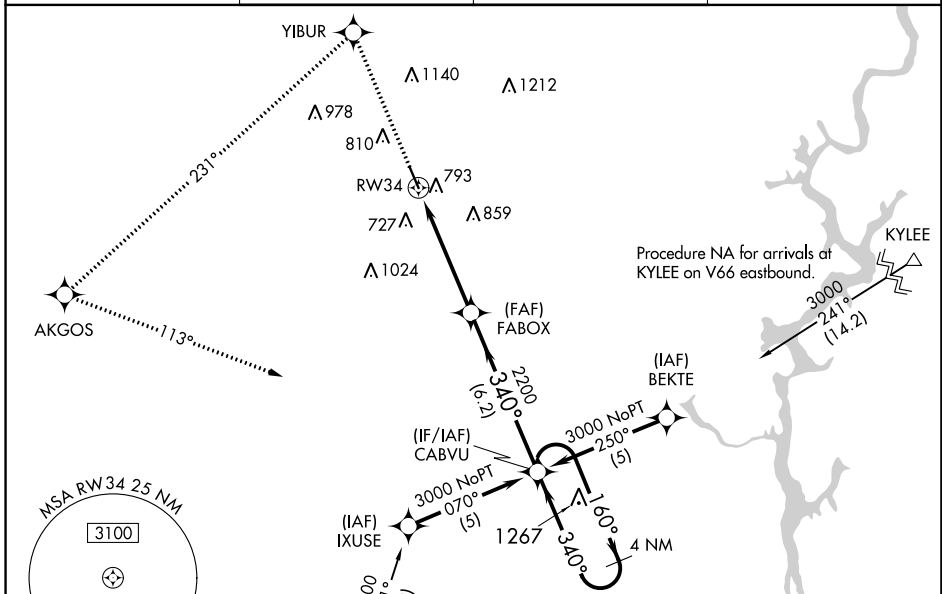
RNAV (GPS) RWY 34

SHELBY COUNTY (E/E/T)

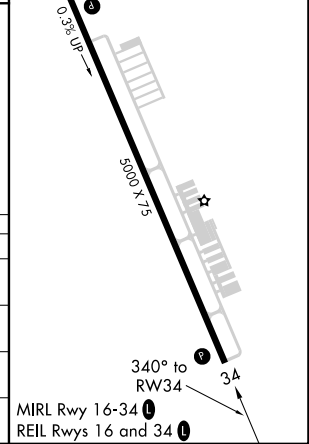
⚠ DME/DME RNP-0.3 NA. Visibility reduction by helicopters NA. When local altimeter setting not received, use Birmingham altimeter setting and increase all DA 63 feet and all MDA 80 feet; increase LPV all Cats, LNAV/VNAV all Cats and Circling Cat C visibilities 1/2 SM. Baro-VNAV NA when using Birmingham altimeter setting. For uncompensated Baro-VNAV systems, LNAV/VNAV NA below -16°C (4°F) or above 47°C (116°F). VDP NA with Birmingham altimeter setting.

⚠ MISSED APPROACH: Climb to 3000 direct YIBUR and left turn on track 231° to AKGOS and left turn on track 113° to CABVU and hold.

ASOS 134.325	BIRMINGHAM APP CON 123.8 256.8	GCO 121.725	UNICOM 122.7 (CTAF) 0
------------------------	--	-----------------------	---------------------------------



ELEV 586	TDZE 586
----------	----------



CATEGORY	A	B	C	D
LPV DA	947-1¼ 361 (400-1¼)			
LNAV/VNAV DA	1093-1¾ 507 (600-1¾)			
LNAV MDA	1100-1 514 (600-1)	1100-1½ 514 (600-1½)	1100-1¾ 514 (600-1¾)	
CIRCLING	1120-1 534 (600-1)	1340-2¼ 754 (800-2¼)	1580-3 994 (1000-3)	

SE-4, 05 SEP 2024 to 03 OCT 2024

SE-4, 05 SEP 2024 to 03 OCT 2024