

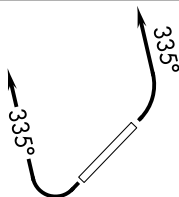
(BNYRD6.BNYRD) 19003

BNYRD SIX DEPARTURE (RNAV)

AL-5651 (FAA)

SCOTTSDALE (SDL)
SCOTTSDALE, ARIZONA

ATIS ★
 118.6
 CLNC DEL
 124.8
 GND CON
 121.6
 SCOTTSDALE TOWER ★
 119.9
 PHOENIX DEP CON
 120.7 239.0



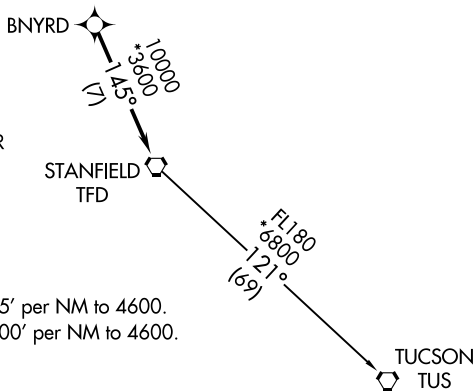
**TOP ALTITUDE:
 ASSIGNED BY ATC**

- NOTE: RNAV 1.
- NOTE: Turbojets and turboprops only.
- NOTE: RADAR required.
- NOTE: GPS required.
- NOTE: Aircraft departing KGEU and KGYR ATC assigned only.
- NOTE: Rwy 21: Do not exceed 210K until established on assigned heading.

TAKEOFF MINIMUMS

Rwy 3: Standard with minimum climb of 445' per NM to 4600.
 Rwy 21: Standard with minimum climb of 300' per NM to 4600.

NOTE: Chart not to scale.



SW-4, 05 SEP 2024 to 03 OCT 2024

SW-4, 05 SEP 2024 to 03 OCT 2024



DEPARTURE ROUTE DESCRIPTION

TAKEOFF RUNWAY 3: Climbing left turn heading 335° or as assigned by ATC, thence. . .

TAKEOFF RUNWAY 21: Climbing right turn heading 335° or as assigned by ATC, thence. . .

. . . expect RADAR vectors to BNYRD, then on track 145° to TFD VORTAC, then on (transition), maintain ATC assigned altitude, expect filed altitude 3 minutes after departure.

TUCSON TRANSITION (BNYRD6.TUS)

BNYRD SIX DEPARTURE (RNAV)

(BNYRD6.BNYRD) 24MAY18

SCOTTSDALE, ARIZONA
SCOTTSDALE (SDL)