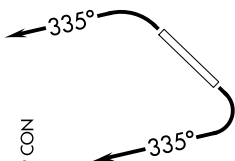


SW-4, 05 SEP 2024 to 03 OCT 2024

**TOP ALTITUDE:  
ASSIGNED BY ATC**

ATIS\*  
118.6  
CLNC DEL  
124.8  
GND CON

SCOTTSDALE TOWER\*  
121.6  
119.9  
PHOENIX DEP CON  
120.7 239.0



**DEPARTURE ROUTE DESCRIPTION**

**TAKEOFF RUNWAY 3:** Climbing left turn heading 335° or as assigned by ATC, thence. . . .  
**TAKEOFF RUNWAY 21:** Climbing right turn heading 335° or as assigned by ATC. Thence. . . .  
. . . on RADAR vectors to ECLPS, then on track 111° to KATMN, then on (transition). Maintain ATC assigned altitude, expect filed altitude 3 minutes after departure.

**PHASE TRANSITION (KATMN6.PHASE)**

**TAKEOFF MINIMUMS**

Rwy 3: Standard with minimum climb of 445' per NM to 4600.  
Rwy 21: Standard with minimum climb of 300' per NM to 4600.

NOTE: RNAV 1.

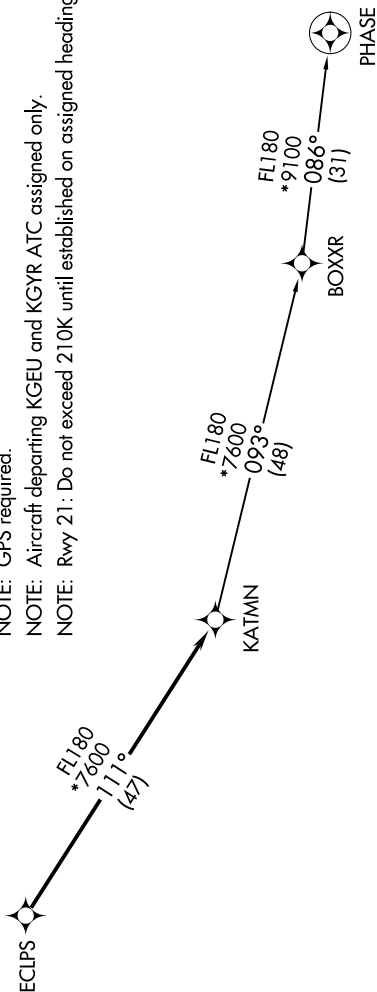
NOTE: Turbojets and turboprops only.

NOTE: RADAR required.

NOTE: GPS required.

NOTE: Aircraft departing KGEU and KGYR ATC assigned only.

NOTE: Rwy 21 : Do not exceed 210K until established on assigned heading.



NOTE: Chart not to scale.

SW-4, 05 SEP 2024 to 03 OCT 2024