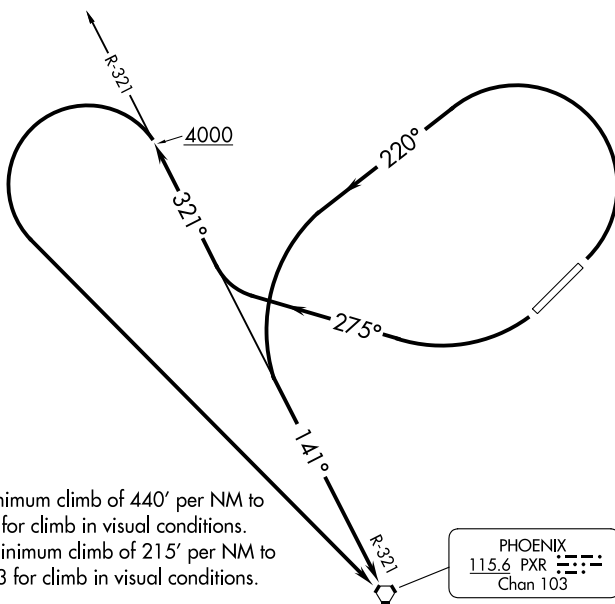


ATIS ★
118.6
SCOTTSDALE TOWER ★
119.9 (CTAF)
PHOENIX DEP CON
120.7 239.0



TAKEOFF MINIMUMS

- Rwy 3: Standard with minimum climb of 440' per NM to 4000, or 3100-3 for climb in visual conditions.
- Rwy 21: Standard with minimum climb of 215' per NM to 4000, or 3100-3 for climb in visual conditions.

TAKEOFF OBSTACLE NOTES

- Rwy 3: Multiple light standards beginning 63' from DER, 445' left of centerline, up to 44' AGL/1554' MSL.
Hoist on dike 878' from DER, 735' left of centerline, 51' AGL/1561' MSL.
Dike beginning 1066' from DER, 316' left of centerline, 38' AGL/1548' MSL.
Day marker on dike, 1230' from DER, 5' left of centerline, 39' AGL/1549' MSL.
Tree 765' from DER, 115' left of centerline, 22' AGL/1532' MSL.
Road beginning 647' from DER, 296' left of centerline, 19' AGL/1529' MSL.
Fence beginning 5' from DER, 338' right of centerline, 6' AGL/1511' MSL.
Light standard 1013' from DER, 430' right of centerline, 44' AGL/1552' MSL.
- Rwy 21: Trees 1072' from DER, 426' right of centerline, 53' AGL/1497' MSL.
Building 316' from DER, 537' right of centerline, 23' AGL/1467' MSL.
Tree 2087' from DER, 418' left of centerline, 61' AGL/1505' MSL.
Tree 1432' from DER, 438' right of centerline, 38' AGL/1482' MSL.
Tree 2234' from DER, 559' left of centerline, 58' AGL/1502' MSL.

NOTE: Chart not to scale.

DEPARTURE ROUTE DESCRIPTION

TAKEOFF RUNWAY 3: Climbing left turn to 4000 via heading 220° and PXR R-321 southeast bound to PXR VORTAC. Thence. . . or, for climb in visual conditions: cross Scottsdale Airport at or above 4500 before proceeding on course.

TAKEOFF RUNWAY 21: Climbing right turn to 4000 via heading 275° and PXR R-321 northwest bound, when established on PXR R-321 northwest bound and reaching 4000, left turn direct PXR VORTAC. Thence. . . or, for climb in visual conditions: cross Scottsdale Airport at or above 4500 before proceeding on course.

. . . Continue climb on course.