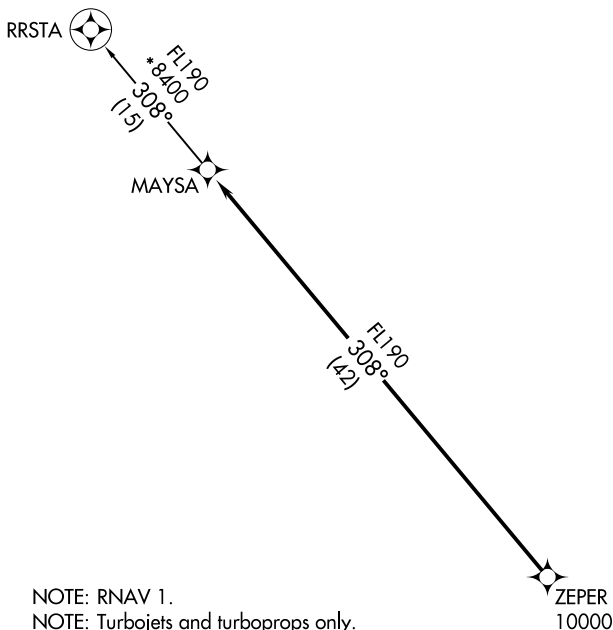


**TOP ALTITUDE:  
ASSIGNED BY ATC**

- ATIS\* 118.6
- CLNC DEL 124.8
- GND CON 121.6
- SCOTTSDALE TOWER\* 119.9
- PHOENIX DEP CON 120.7 239.0

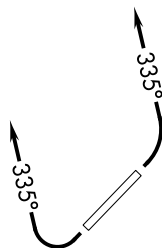


- NOTE: RNAV 1.
- NOTE: Turbojets and turboprops only.
- NOTE: RADAR required.
- NOTE: GPS required.
- NOTE: Aircraft departing KGEU and KGYR ATC assigned only. Do not file.
- NOTE: Rwy 21: Do not exceed 210K until established on assigned heading.

**TAKEOFF MINIMUMS**

- Rwy 3: Standard with minimum climb of 445' per NM to 4600.
- Rwy 21: Standard with minimum climb of 300' per NM to 4600.

NOTE: Chart not to scale.



**DEPARTURE ROUTE DESCRIPTION**

- TAKEOFF RUNWAY 3: Climbing left turn heading 335° or as assigned by ATC, thence. . . .
- TAKEOFF RUNWAY 21: Climbing right turn heading 335° or as assigned by ATC. Thence. . . .
- . . . .expect RADAR vectors to cross ZEPER at or above 10000, then on track 308° to MAYSA, then on RRSTA TRANSITION. Maintain ATC assigned altitude, expect filed altitude 3 minutes after departure.

**RRSTA TRANSITION (MAYSA7.RRSTA)**