

APP CRS	Rwy Idg	N/A
109°	TDZE	N/A
	Apt Elev	1510

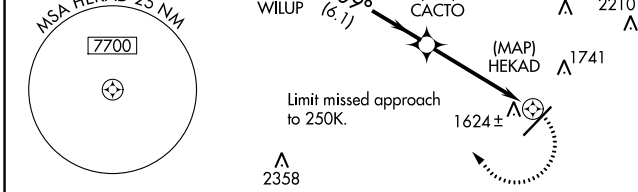
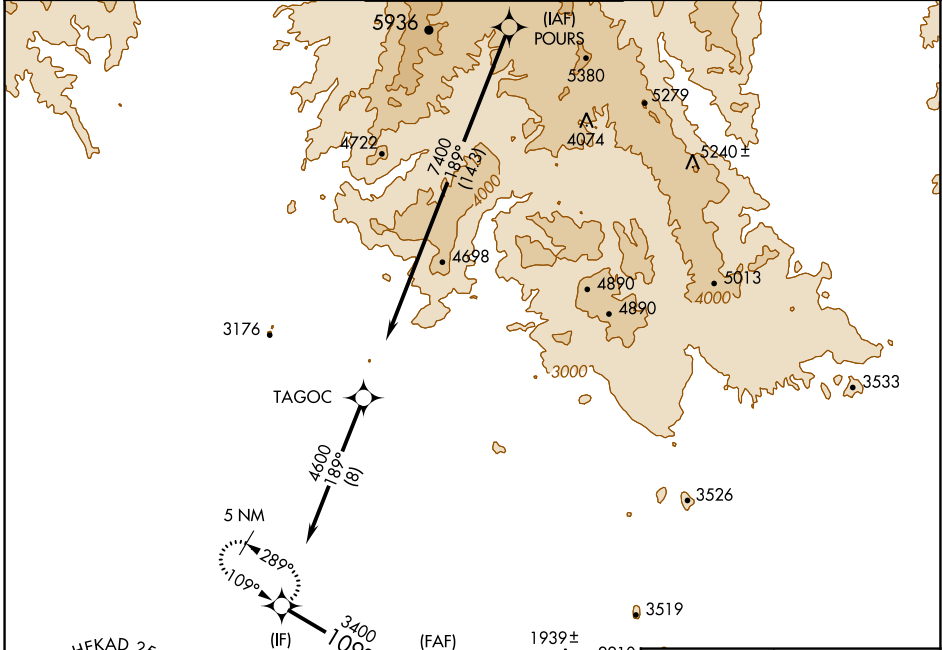
RNAV (GPS)-D

SCOTTSDALE (SDL)

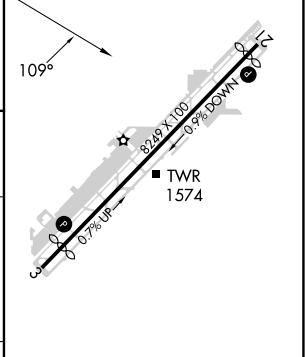
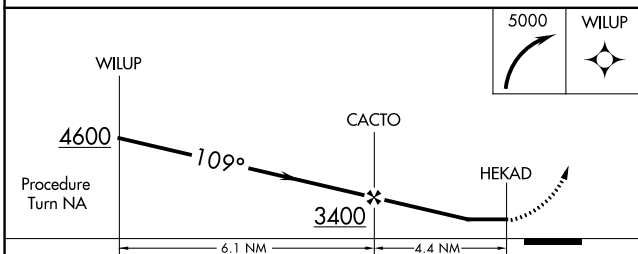
▼ When VGSI inoperative, circling Rwy 21 NA at night. When local altimeter setting not received, use Phoenix Sky Harbor Intl altimeter setting and increase all MDA 100 feet and increase visibility Cat C ¼ SM. DME/DME RNP-0.3 NA.

MISSED APPROACH: Climbing right turn to 5000 direct WILUP and hold, continue climb-in-hold to 5000.

ATIS ★ 118.6	PHOENIX APP CON 120.7 239.0	SCOTTSDALE TOWER ★ 119.9 (CTAF) 0	GND CON 121.6	CLNC DEL 124.8
------------------------	---------------------------------------	---	-------------------------	--------------------------



ELEV 1510	D
-----------	----------



CATEGORY	A	B	C	D
CIRCLING	2080-1 570 (600-1)	2100-1 590 (600-1)	2460-2¾ 950 (1000-2¾)	3300-3 1790 (1800-3)

MIRL Rwy 3-21 **0**
REIL Rwy 3 and 21 **0**

SW-4, 05 SEP 2024 to 03 OCT 2024

SW-4, 05 SEP 2024 to 03 OCT 2024