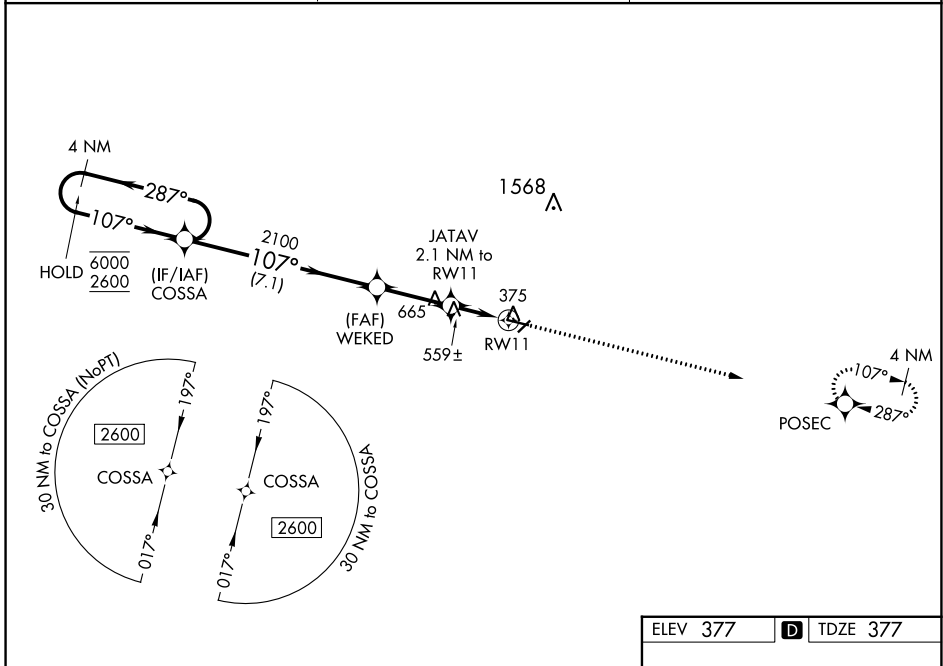


WAAS CH 82521 W11A	APP CRS 107°	Rwy ldg 4400 TDZE 377 Apt Elev 377
--	------------------------	---

RNAV (GPS) RWY 11

COCHRAN (48A)

RNP APCH - GPS.		<p>MISSED APPROACH: Climb to 2600 direct POSEC and hold.</p>
<p>⚠ Rwy 11 helicopter visibility reduction below 1 SM NA. For uncompensated Baro-VNAV systems, LNAV/VNAV NA below -15°C or above 54°C. Straight-in Rwy 11 NA at night, Circling Rwy 5, 11 and 23 NA at night.</p>		
AWOS-3PT 120.975	ATLANTA APP CON * 124.2 279.6	UNICOM 122.8 (CTAF) 0



SE-4, 05 SEP 2024 to 03 OCT 2024

SE-4, 05 SEP 2024 to 03 OCT 2024

4 NM Holding Pattern		VGSI and RNAV glidepath not coincident (VGSI Angle 3.25/TCH 45).		ELEV 377	D TDZE 377
<p>6000 ← 287°</p> <p>2600 → 107°</p> <p>GP 3.25° TCH 54</p>		<p>COSSA</p> <p>WEKED</p> <p>JATAV</p> <p>RW11</p>	<p>2100</p> <p>2.1 NM to RW11</p> <p>1160</p>	<p>2600</p> <p>POSEC</p>	
CATEGORY	A	B	C	D	
LPV DA		678-1	301 (400-1)		
LNAV/VNAV DA		690-1	313 (400-1)		
LNAV MDA	820-1	443 (500-1)	820-1 3/8	443 (500-1 3/8)	
C CIRCLING	820-1 443 (500-1)	860-1 483 (500-1)	980-1 3/4 603 (700-1 3/4)	980-2 603 (700-2)	