

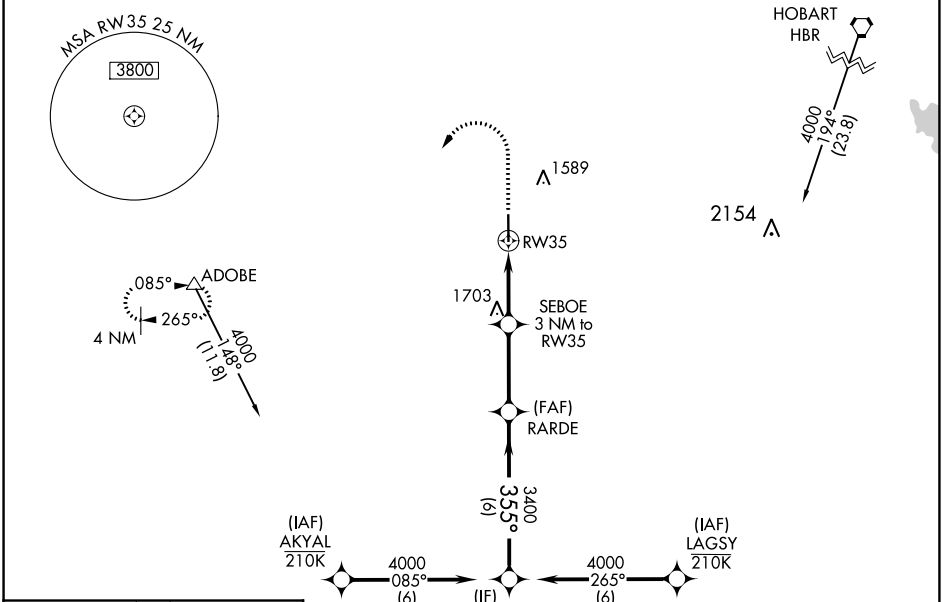
WAAS CH <b>93914</b> <b>W35A</b>	APP CRS <b>355°</b>	Rwy Idg TDZE Apt Elev	<b>5501</b> <b>1423</b> <b>1433</b>
--	------------------------	-----------------------------	---

# RNAV (GPS) RWY 35

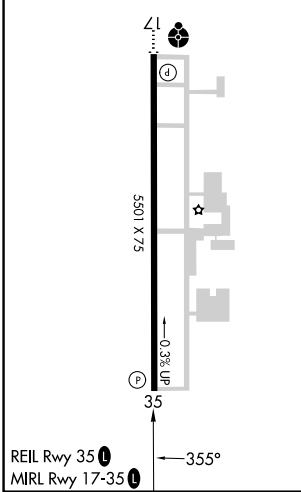
ALTUS/QUARTZ MOUNTAIN RGNL (A.X.S)

RNP APCH.	MISSED APPROACH: Climb to 2100 then climbing left turn to 4000 direct ADOBE and hold.
For uncompensated Baro-VNAV systems, LNAV/VNAV NA below -17°C or above 54°C.	

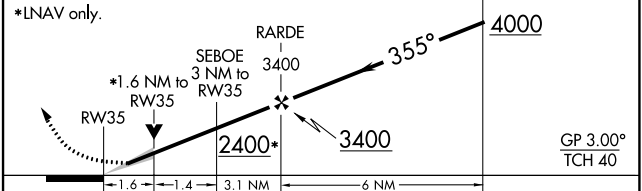
AWOS-3PT <b>118.825</b>	ALTUS APP CON* <b>125.1 353.7</b>	UNICOM <b>122.8 (CTAF) 0</b>
----------------------------	--------------------------------------	---------------------------------



ELEV 1433	TDZE 1423
-----------	-----------



2100 4000 ADOBE  
 VGSIs and RNAV glidepath not coincident (VGSi Angle 3.00/TCH 40).  
 \*LNAV only.



CATEGORY	A	B	C	D
LPV DA	1673-7/8 250 (300-7/8)			NA
LNAV/VNAV DA	1673-7/8 250 (300-7/8)			NA
LNAV MDA	1960-1	537 (600-1)	1960-1/2 537 (600-1/2)	NA
<b>C</b> CIRCLING	1960-1	527 (600-1)	2020-1/2 587 (600-1/2)	NA

SC-1, 05 SEP 2024 to 03 OCT 2024

SC-1, 05 SEP 2024 to 03 OCT 2024