


LOC/DME I-JLS 110.3	APP CRS 051°	Rwy Idg 5002
		TDZE 193
		Apt Elev 193

LOC RWY 5

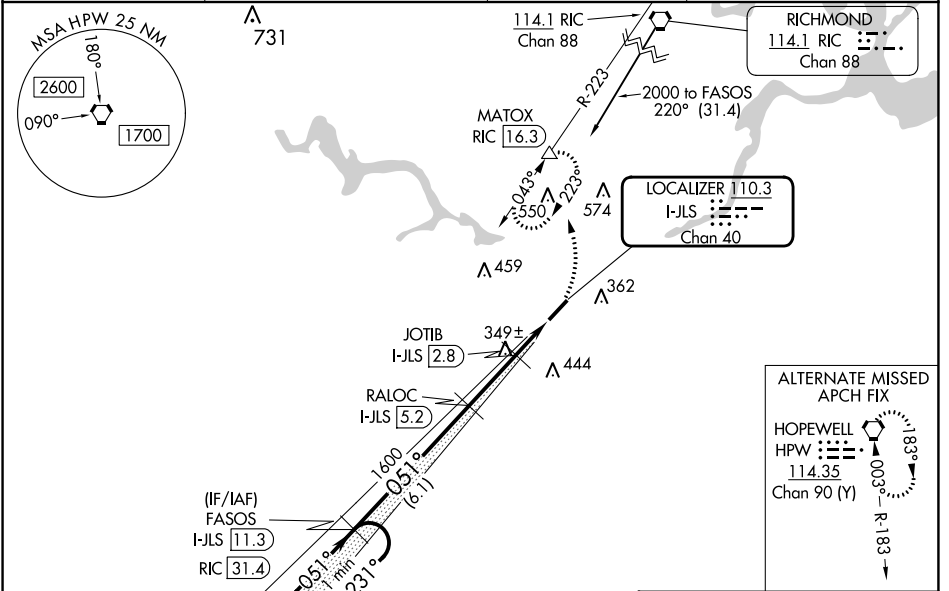
TRI CITIES EXEC/DINWIDDIE COUNTY (PTB)

⚠ **⚠** DME required. Helicopter visibility reduction below 3/4 SM NA. VDP NA when using Richmond Exec/Chesterfield County altimeter setting. When local altimeter setting not received, use Richmond Exec/Chesterfield County altimeter setting and increase all MDA 40 feet; increase S-LOC 5 Cat C visibility 1/8 mile and Circling Cat C visibility 1/4 mile. For inop ODALS, increase S-LOC 5 Cat C visibility to 1 1/8 mile. Inop table does not apply to S-LOC 5 Cat A and B. Inop table does not apply to S-LOC Cat A and B when using Richmond Exec/Chesterfield County altimeter setting.

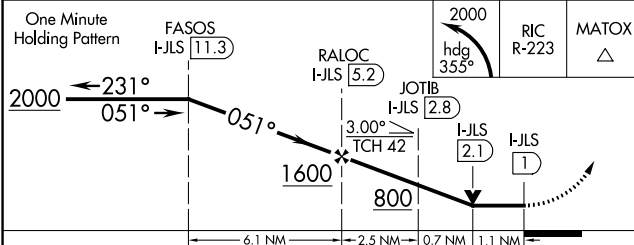
ODALS  ...

MISSED APPROACH:
Climbing left turn to 2000 on heading 355° and on RIC VORTAC R-223 to MATOX/RIC 16.3 DME and hold.



AWOS-3 133.325	POTOMAC APP CON 126.75 307.2	GCO 135.075	UNICOM 122.7 (CTAF) 0
--------------------------	--	-----------------------	---------------------------------



DME REQUIRED



ELEV 193	TDZE 193
----------	----------

MIRL Rwy 5-23	
REIL Rwy 23	
FAF to MAP 4.3 NM	
Knots	60 90 120 150 180
Min:Sec	4:18 2:52 2:09 1:43 1:26

LOC RWY 5

NE-3, 05 SEP 2024 to 03 OCT 2024

NE-3, 05 SEP 2024 to 03 OCT 2024