

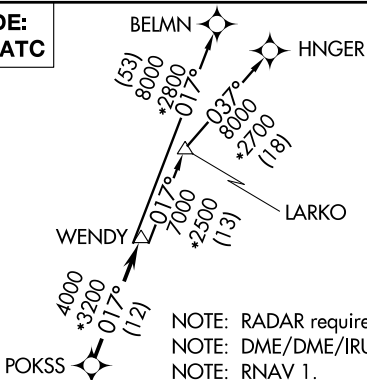
(WENDY3.WENDY) 23166

WENDY THREE DEPARTURE (RNAV)

UNIVERSITY OF OKLAHOMA WESTHEIMER (OUN)
AL-5672 (FAA) NORMAN, OKLAHOMA

AWOS-3PT
119.55
GND CON
121.6
WESTHEIMER TOWER ★
118.0
OKE CITY DEP CON
120.45 288.325

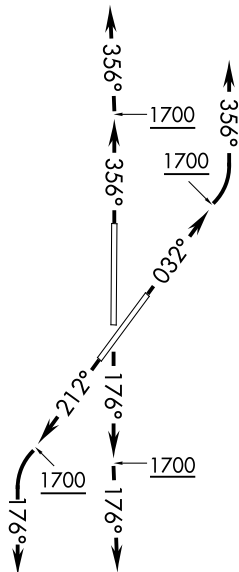
**TOP ALTITUDE:
ASSIGNED BY ATC**



NOTE: RADAR required.
NOTE: DME/DME/IRU or GPS required.
NOTE: RNAV 1.

TAKEOFF MINIMUMS

Rwys 3, 18, 21, 36: Standard with minimum climb of 500' per NM to 1700.



NOTE: Chart not to scale.

DEPARTURE ROUTE DESCRIPTION

- TAKEOFF RUNWAY 3:** Climb heading 032° to 1700, then left turn heading 356° or as assigned by ATC, expect RADAR vectors to POKSS, thence . . .
- TAKEOFF RUNWAY 18:** Climb heading 176° to 1700, then heading 176° or as assigned by ATC, expect RADAR vectors to POKSS, thence . . .
- TAKEOFF RUNWAY 21:** Climb heading 212° to 1700, then left turn heading 176° or as assigned by ATC, expect RADAR vectors to POKSS, thence . . .
- TAKEOFF RUNWAY 36:** Climb heading 356° to 1700, then heading 356° or as assigned by ATC, expect RADAR vectors to POKSS, thence . . .
- . . . on track 017° to WENDY, then on (transition). Maintain 3000 or as assigned by ATC. Expect filed altitude 10 minutes after departure.
- BELMN TRANSITION (WENDY3.BELMN)
- HNGER TRANSITION (WENDY3.HNGER)
- LARKO TRANSITION (WENDY3.LARKO)

WENDY THREE DEPARTURE (RNAV)

(WENDY3.WENDY) 07DEC17

NORMAN, OKLAHOMA
UNIVERSITY OF OKLAHOMA WESTHEIMER (OUN)

SC-1, 05 SEP 2024 to 03 OCT 2024

SC-1, 05 SEP 2024 to 03 OCT 2024