

VORTAC SQS 114.7 Chan 94	APP CRS 271°	Rwy ldg TDZE Apt Elev	N/A N/A 126
--	------------------------	--------------------------	--

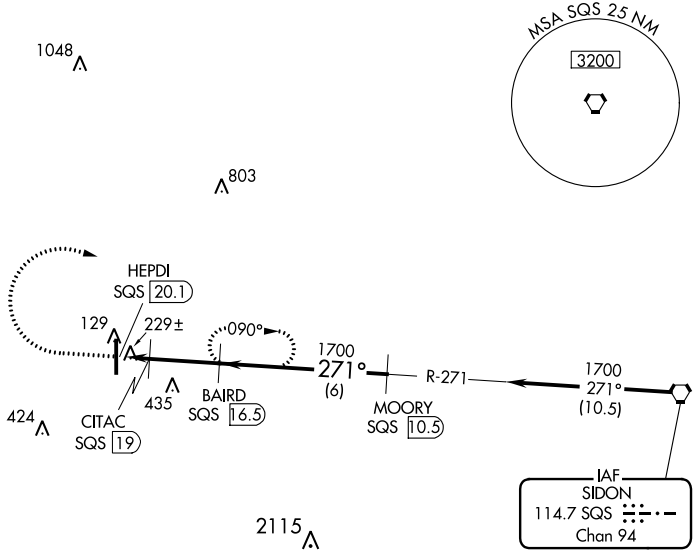
VOR/DME-A

INDIANOLA MUNI (IDL)

NA Use Greenville altimeter setting, when not received, use Greenwood altimeter setting and increase all MDA 40 feet and Circling Cat C/D visibility ¼ SM. Circling to Rwy 18 NA at night. Helicopter visibility reduction below 1 SM NA.

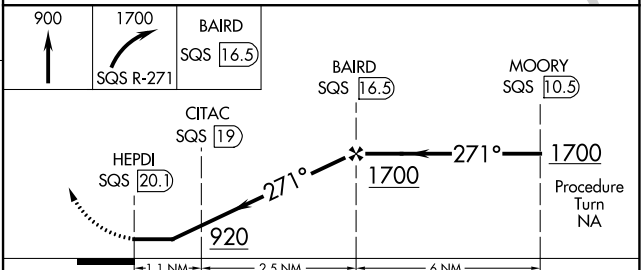
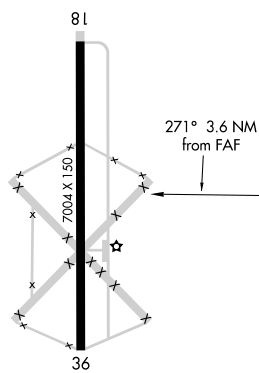
MISSED APPROACH: Climb to 900, then climbing right turn to 1700 on SQS VORTAC R-271 to BAIRD/16.50 DME and hold.

GLH ASOS 125.525	MEMPHIS CENTER 135.875 269.35	UNICOM 122.8 (CTAF)
----------------------------	---	-------------------------------



Procedure NA for arrivals at SQS VORTAC on airway radial 273.

ELEV **126**



CATEGORY	A	B	C	D
CIRCLING	580-1 454 (500-1)	600-1 474 (500-1)	840-2 714 (800-2)	840-2¼ 714 (800-2¼)

SC-4, 05 SEP 2024 to 03 OCT 2024

SC-4, 05 SEP 2024 to 03 OCT 2024