

WAAS CH <b>99505</b> <b>W18A</b>	APP CRS <b>180°</b>	Rwy Idg <b>5503</b> TDZE <b>1497</b> Apt Elev <b>1498</b>
--	------------------------	---

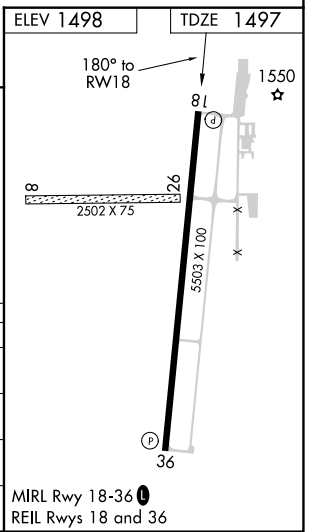
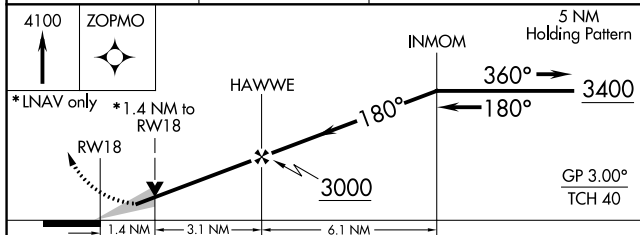
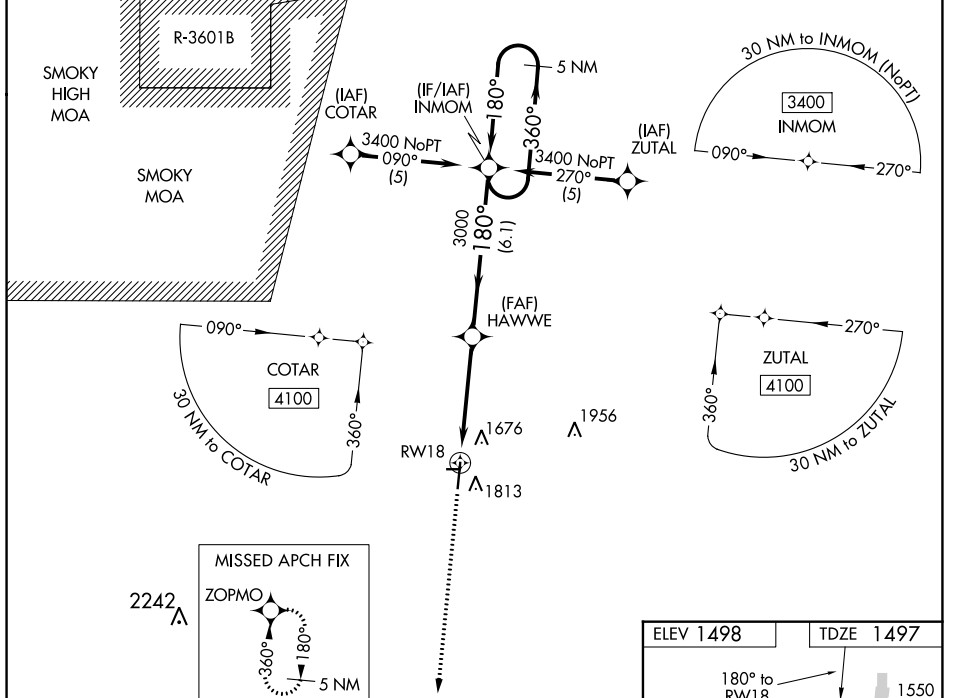
# RNAV (GPS) RWY 18

MC PHERSON (MPR)

**▼** When local altimeter setting not received, use Salina altimeter setting: increase LPV DA to 1917 feet, LNAV/VNAV DA to 2120 feet and all visibilities 3/8 mile; increase all MDA 100 feet and visibility Cat C 3/8 mile. For uncompensated Baro-VNAV systems, LNAV/VNAV NA below -17°C (2°F) or above 54°C (130°F). Baro-VNAV and VDP NA when using Salina altimeter setting. DME/DME RNP-0.3 NA. Circling NA to Rwy 8 and 26.

**▲ NA** MISSED APPROACH: Climb to 4100 direct ZOPMO and hold.

AWOS-3P <b>119.025</b>	WICHITA APP CON <b>125.5 306.2</b>	UNICOM <b>122.8 (CTAF) 0</b>
---------------------------	---------------------------------------	---------------------------------



CATEGORY	A	B	C	D
LPV DA	1826-1 1/8	329 (400-1 1/8)		NA
LNAV/ VNAV DA	2029-1 7/8	532 (600-1 7/8)		NA
LNAV MDA	1980-1	483 (500-1)	1980-1 3/8 483 (500-1 3/8)	NA
CIRCLING	2120-1	622 (700-1)	2120-1 3/4 622 (700-1 3/4)	NA

NC-2, 05 SEP 2024 to 03 OCT 2024

NC-2, 05 SEP 2024 to 03 OCT 2024