

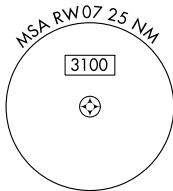
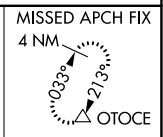
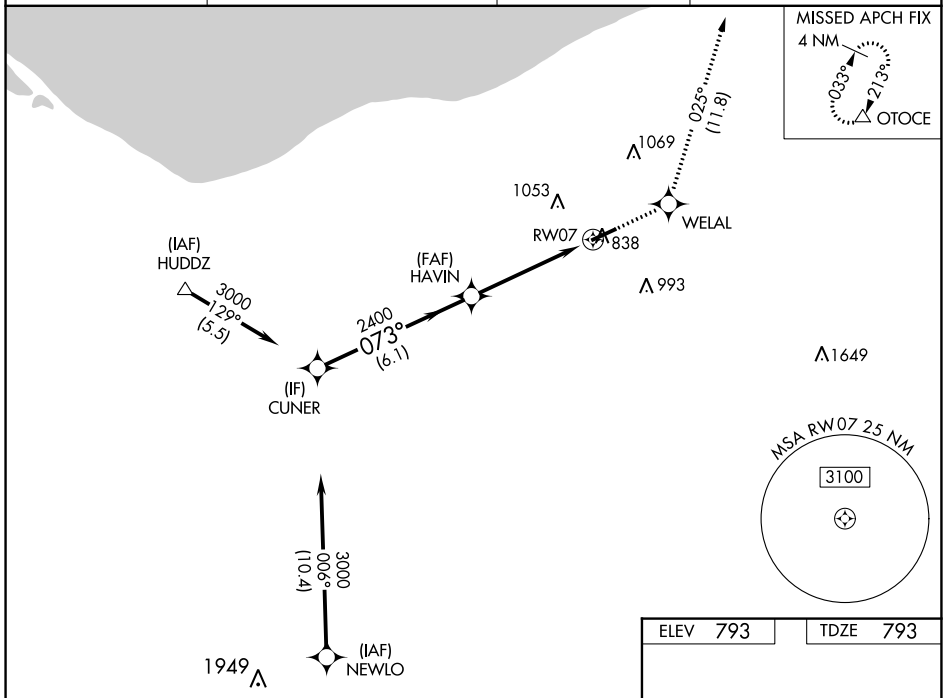
WAAS CH 99612 W07A	APP CRS 073°	Rwy Idg TDZE Apt Elev	5002 793 793
--	------------------------	-----------------------------	---

RNAV (GPS) RWY 7

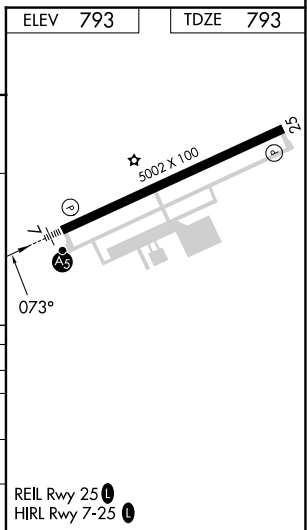
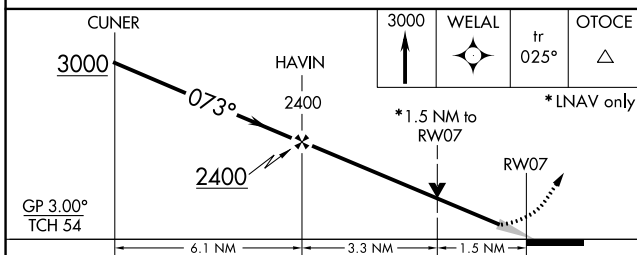
LORAIN COUNTY RGNL (L.P.R.)

RNP APCH.		MALS R	MISSED APPROACH: Climb to 3000 direct WELAL and on track 025° to OTOCE and hold.
For uncompensated Baro-VNAV systems, LNAV/VNAV NA below -16°C (4°F) or above 54°C (130°F).			

ASOS 118.925	CLEVELAND APP CON 125.35 346.325	CLNC DEL 125.7	UNICOM 122.7 (CTAF)
------------------------	--	--------------------------	-------------------------------



ELEV 793	TDZE 793
----------	----------



GP 3.00° TCH 54	*NAVA only			
CATEGORY	A	B	C	D
LPV DA	993-½		200 (200-½)	
LNAV/VNAV DA	1133-¾		340 (400-¾)	
LNAV MDA	1340-½ 547 (600-½)		1340-1⅛ 547 (600-1⅛)	
CIRCLING	1340-1 547 (600-1)	1360-1 567 (600-1)	1420-1¾ 627 (700-1¾)	1420-2 627 (700-2)

EC-2, 05 SEP 2024 to 03 OCT 2024

EC-2, 05 SEP 2024 to 03 OCT 2024