

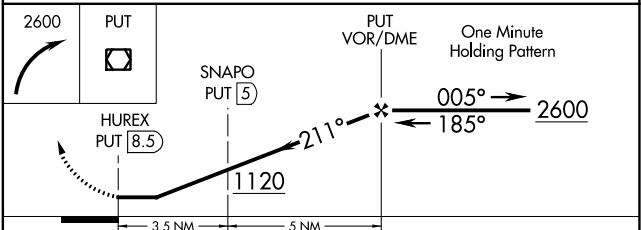
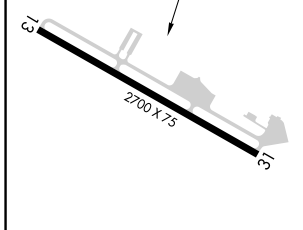
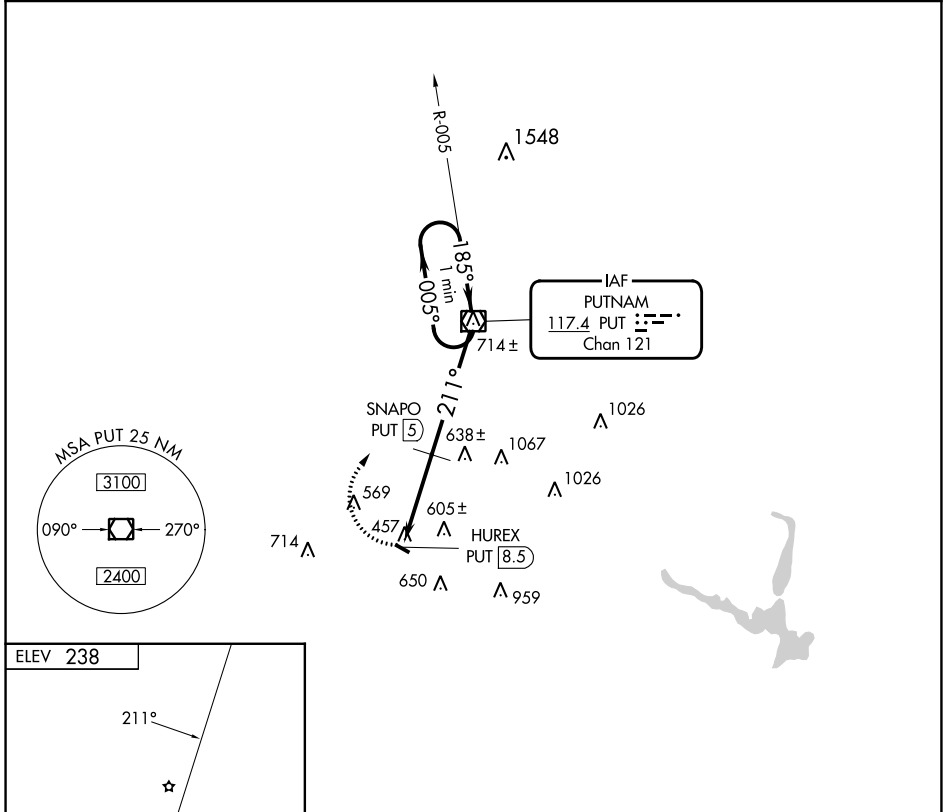
VOR/DME PUT <b>117.4</b> Chan <b>121</b>	APP CRS <b>211°</b>	Rwy Idg TDZE Apt Elev	<b>N/A</b> <b>N/A</b> <b>238</b>
--	------------------------	-----------------------------	--

**VOR-A**  
DANIELSON (LZD)

**NA** When local altimeter setting not received, use Willimantic altimeter setting and increase SNAPO fix minimums Cat B MDA 40 feet.  
Procedure NA at night. Helicopter visibility reduction below 1 SM NA.

MISSED APPROACH: Climbing right turn to 2600 direct PUT VOR/DME and hold.

AWOS-3 <b>119.125</b>	UD ASOS <b>133.675</b>	PROVIDENCE APP CON ★ <b>123.675 244.875</b>	UNICOM <b>123.0 (CTAF)</b>
--------------------------	---------------------------	--	-------------------------------



FAF to MAP 8.5 NM					
Knots	60	90	120	150	180
Min:Sec	8:30	5:40	4:15	3:24	2:50
CATEGORY					
CIRCLING	1120-1¼		882 (900-1¼)		NA
SNAPO FIX MINIMUMS					
CIRCLING	900-1 662 (700-1)		1080-1¼ 842 (900-1¼)		NA

NE-1, 05 SEP 2024 to 03 OCT 2024

NE-1, 05 SEP 2024 to 03 OCT 2024