

WAAS CH <b>99318</b> <b>W23A</b>	APP CRS <b>229°</b>	Rwy Idg <b>4508</b> TDZE <b>195</b> Apt Elev <b>195</b>
--	------------------------	---

# RNAV (GPS) RWY 23

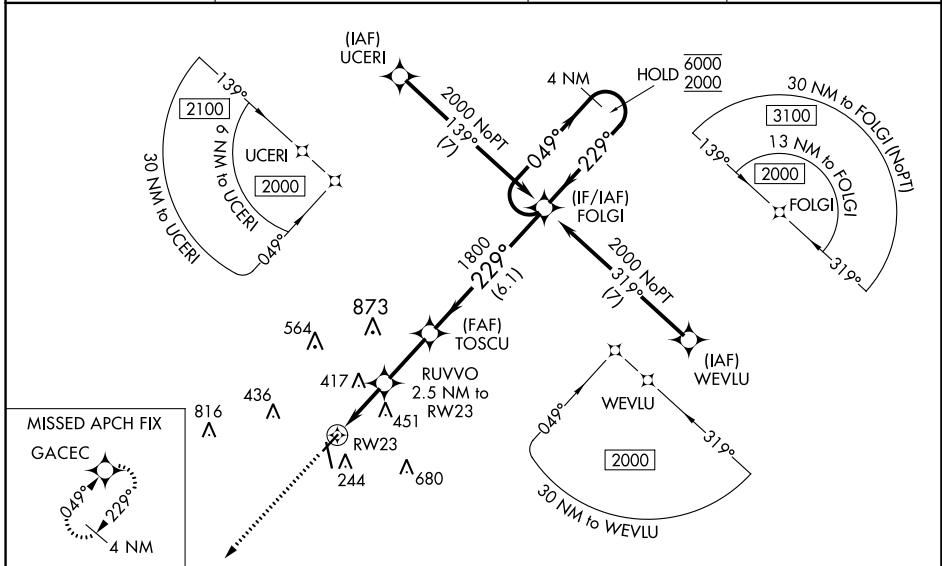
ORANGEBURG MUNI (OGB)

RNP APCH-GPS.

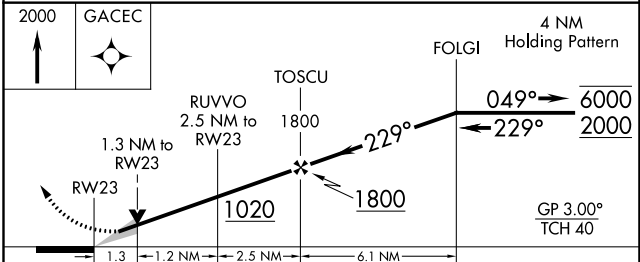
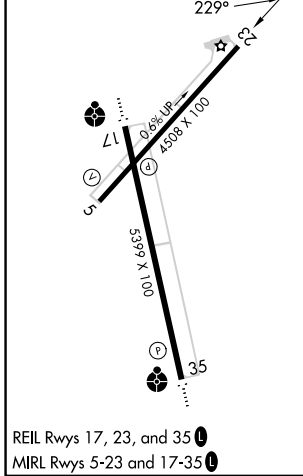
**⚠** Circling Rwy 17 NA at night. Baro-VNAV and VDP NA when using Columbia Metro altimeter setting. For uncompensated Baro-VNAV systems, LNAV/VNAV NA below -4°C or above 54°C. When local altimeter setting not received, use Columbia Metro altimeter setting: increase LPV DA to 538 feet and all visibilities ½ SM; increase LNAV/VNAV DA to 740 feet and all visibilities ¼ SM; increase all MDAs 80 feet and visibility Cats C and D ¼ SM.

MISSED APPROACH: Climb to 2000 direct GACEC and hold.

ASOS <b>118.525</b>	COLUMBIA APP CON <b>124.15 338.2</b>	GCO <b>125.675</b>	UNICOM <b>122.7 (CTAF) 0</b>
------------------------	---	-----------------------	---------------------------------



ELEV <b>195</b>	TDZE <b>195</b>
-----------------	-----------------



CATEGORY	A	B	C	D
LPV DA		459-7/8	264 (300-7/8)	
LNAV/VNAV DA		660-1 3/8	465 (500-1 3/8)	
LNAV MDA	660-1	465 (500-1)	660-1 3/8	465 (500-1 3/8)
CIRCLING	680-1 485 (500-1)	740-1 545 (600-1)	980-2 1/4 785 (800-2 1/4)	980-2 1/2 785 (800-2 1/2)

SE-2, 05 SEP 2024 to 03 OCT 2024

SE-2, 05 SEP 2024 to 03 OCT 2024