

|                         |                        |                             |   |
|-------------------------|------------------------|-----------------------------|---|
| WAAS<br>CH <b>97418</b> | APP CRS<br><b>354°</b> | Rwy Idg<br>TDZE<br>Apt Elev | <b>5399</b><br><b>186</b><br><b>195</b> |
|-------------------------|------------------------|-----------------------------|---|

# RNAV (GPS) RWY 35

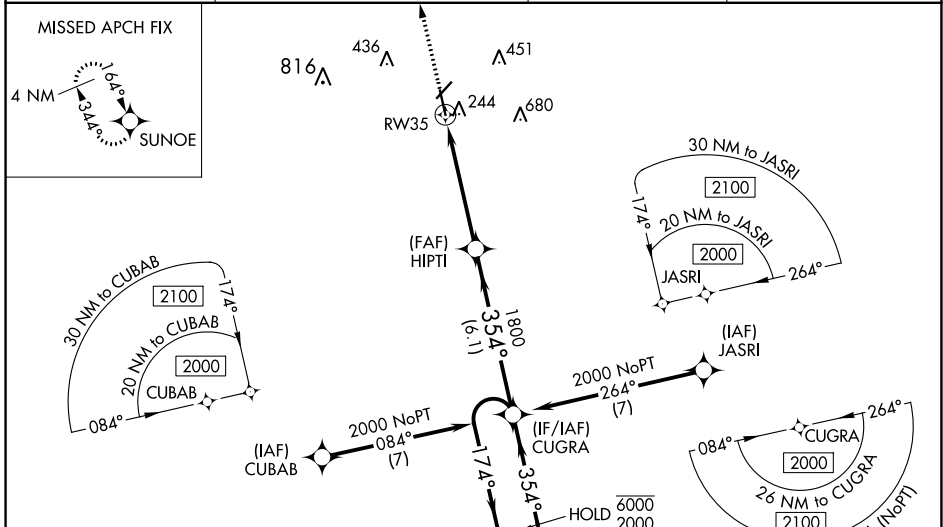
ORANGEBURG MUNI (OGB)

RNP APCH - GPS.

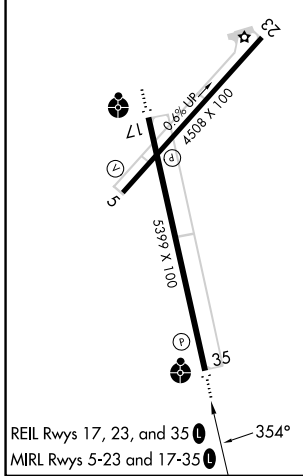
⚠ Circling Rwy 17 NA at night. Baro-VNAV and VDP NA when using Columbia Metro altimeter setting. For uncompensated Baro-VNAV systems, LNAV/VNAV NA below -4°C or above 54°C. Inop table does not apply to LPV. For inop ALS, increase LNAV/VNAV Cat A/B visibility to ½ SM and LNAV Cat C/D visibility to 1½ SM. When local altimeter setting not received, use Columbia Metro altimeter setting: increase LPV DA to 515 feet and all visibilities ½ SM; increase LNAV/VNAV DA to 559 feet and all visibilities ¼ SM; increase all MDAs 80 feet and visibility Cts C and D ¼ SM. For inop ALS when using Columbia Metro altimeter setting, increase LPV and LNAV/VNAV Cat A/B visibility to 1 SM.

ODALS MISSED APPROACH: Climb to 2000 direct SUNOE and hold.

|                        |   |                       |                                 |
|------------------------|---|-----------------------|---------------------------------|
| ASOS<br><b>118.525</b> | COLUMBIA APP CON<br><b>124.15 338.2</b> | GCO<br><b>125.675</b> | UNICOM<br><b>122.7 (CTAF) 0</b> |
|------------------------|---|-----------------------|---------------------------------|



|          |          |
|----------|----------|
| ELEV 195 | TDZE 186 |
|----------|----------|



| CATEGORY     | A                    | B                    | C                      | D                      |
|--------------|----------------------|----------------------|------------------------|------------------------|
| LPV DA       |                      | 436-¾                | 250 (300-¾)            |                        |
| LNAV/VNAV DA |                      | 480-¾                | 294 (300-¾)            |                        |
| LNAV MDA     | 640-¾                | 454 (500-¾)          | 640-1⅛                 | 454 (500-1⅛)           |
| CIRCLING     | 680-1<br>485 (500-1) | 740-1<br>545 (600-1) | 980-2¼<br>785 (800-2¼) | 980-2½<br>785 (800-2½) |

SE-2, 05 SEP 2024 to 03 OCT 2024

SE-2, 05 SEP 2024 to 03 OCT 2024