

WAAS CH <b>57918</b>	APP CRS <b>049°</b>	Rwy Idg TDZE <b>191</b>	<b>4508</b>
<b>W05A</b>		Apt Elev <b>195</b>	

# RNAV (GPS) RWY 5

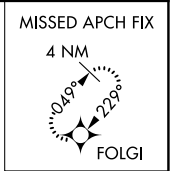
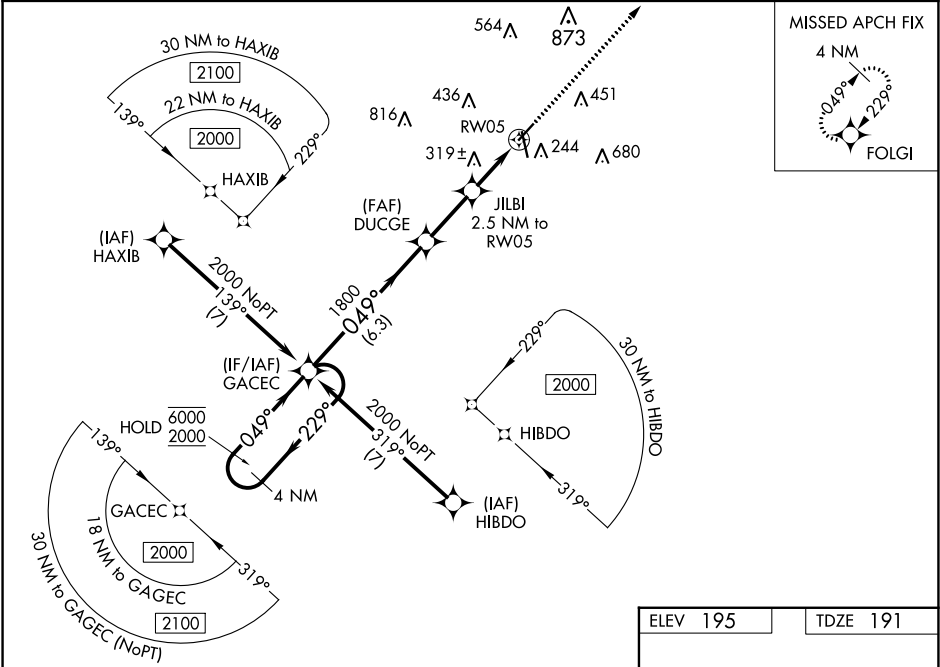
ORANGEBURG MUNI (OGB)

RNP APCH - GPS.

**⚠** Circling Rwy 17 NA at night. Baro-VNAV and VDP NA when using Columbia Metro altimeter setting. Rwy 5 helicopter visibility reduction below 3/4 SM NA. For uncompensated Baro-VNAV systems, LNAV/VNAV NA below -4°C or above 54°C. When local altimeter setting not received, use Columbia Metro altimeter setting: increase LPV DA to 542 feet; increase LNAV/VNAV DA to 520 feet; increase all MDAs 80 feet and visibility Cats C and D 1/4 SM.

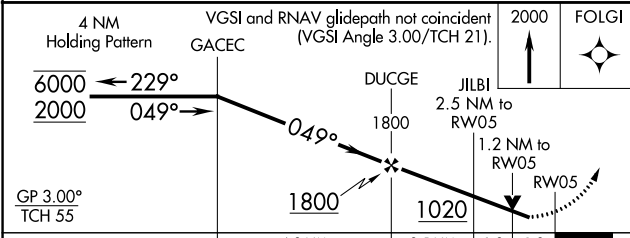
**MISSED APPROACH:**  
Climb to 2000 direct FOLGI and hold.

ASOS <b>118.525</b>	COLUMBIA APP CON <b>124.15 338.2</b>	GCO <b>125.675</b>	UNICOM <b>122.7 (CTAF) 0</b>
------------------------	---	-----------------------	---------------------------------

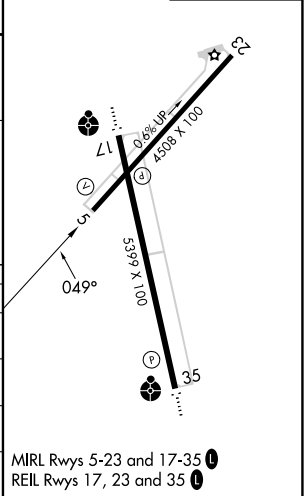


SE-2, 05 SEP 2024 to 03 OCT 2024

SE-2, 05 SEP 2024 to 03 OCT 2024



ELEV 195	TDZE 191
----------	----------



CATEGORY	A	B	C	D
LPV DA		463-1	272 (300-1)	
LNAV/VNAV DA		441-1	250 (300-1)	
LNAV MDA	580-1	389 (400-1)	580-1 1/8	389 (400-1 1/8)
CIRCLING	680-1 485 (500-1)	740-1 545 (600-1)	980-2 1/4 785 (800-2 1/4)	980-2 1/2 785 (800-2 1/2)

MIRL Rwy 5-23 and 17-35 **0**  
REIL Rwy 17, 23 and 35 **0**