

LOC/DME I-VJI 108.3 Chan 20	APP CRS 241°	Rwy Idg TDZE Apt Elev	4471 2087 2087
--	------------------------	-----------------------------	---

LOC RWY 24

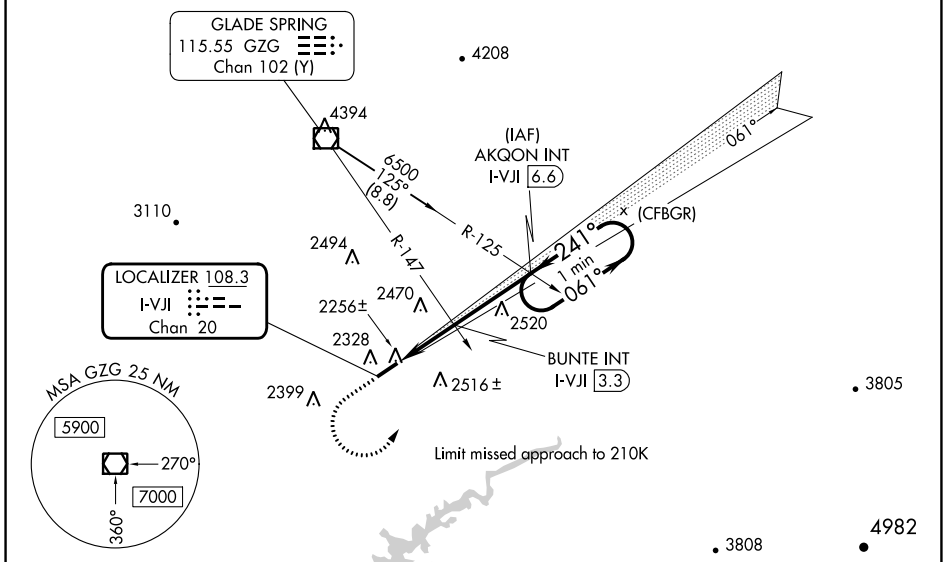
VIRGINIA HIGHLANDS (VJI)

⚠ Inop table does not apply. GPS required. Cat D Straight-in minima NA when using Tri-Cities altimeter setting. When local altimeter setting not received; use Tri-Cities altimeter setting and increase all MDA 140 feet; and increase S-24 Cat A and B and Circling Cat B visibility ¼ mile, and S-24 Cat C and Circling Cat C visibility ½ mile. Increase BUNTE fix minimums S-24 Cat C visibility ¾ mile, Circling Cats A and B visibility ¼ mile, and Circling Cat C visibility ½ mile. Helicopter visibility reduction below 1 SM NA.

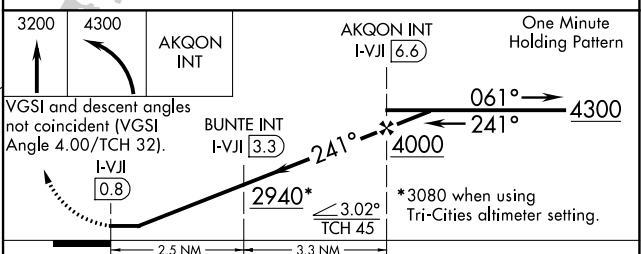
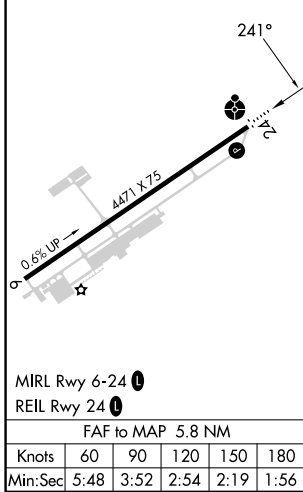


MISSED APPROACH: Climb to 3200 then climbing left turn to 4300 direct AKQON INT and hold.

AWOS-3 128.125	TRI-CITY APP CON ★ 125.25 349.0	UNICOM 122.8(CTAF) 0
--------------------------	---	--------------------------------



ELEV 2087	TDZE 2087
-----------	-----------



CATEGORY	A	B	C	D
S-24	2940-1 853 (900-1)	2940-1¼ 853 (900-1¼)	2940-2½ 853 (900-2½)	853 (900-2½)
C CIRCLING	2940-1¼ 853 (900-1¼)	853 (900-1¼)	2940-2½ 853 (900-2½)	3080-3 993 (1000-3)
BUNTE FIX MINIMUMS				
S-24	2520-1	433 (500-1)	2520-1¼	433 (500-1¼)
C CIRCLING	2860-1	773 (800-1)	2900-2½ 813 (900-2½)	3080-3 993 (1000-3)

NE-3, 05 SEP 2024 to 03 OCT 2024

NE-3, 05 SEP 2024 to 03 OCT 2024