

TULLAHOMA, TENNESSEE

RNAV (GPS) RWY 21

APCH CRS	Rwy Idg	6001
207°	TDZE	1065
	Arprt Elev	1065

- (USAF)

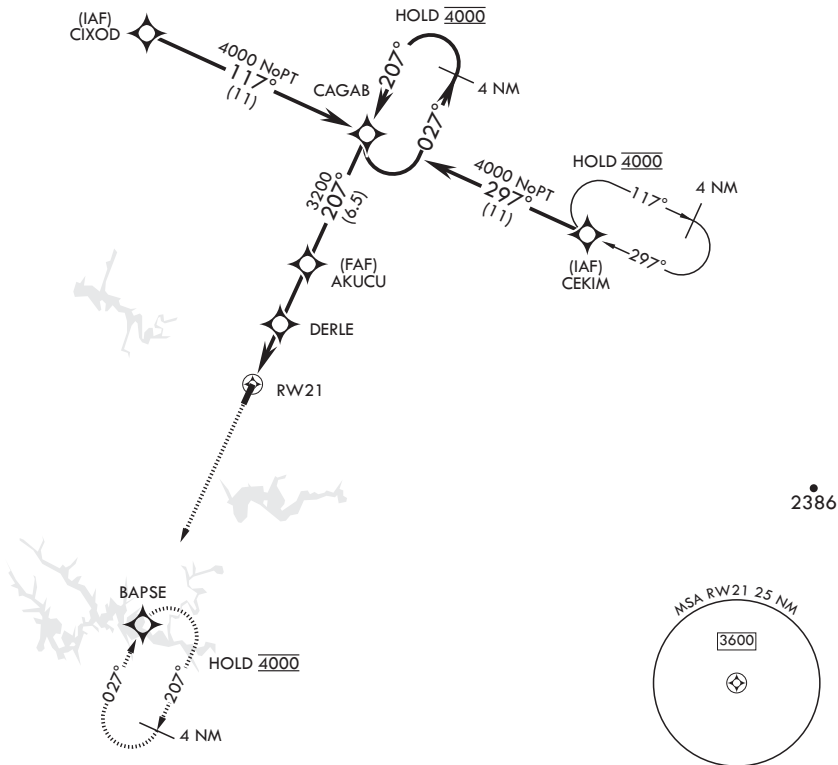
ARNOLD AFB (KAYX)

RNP APCH

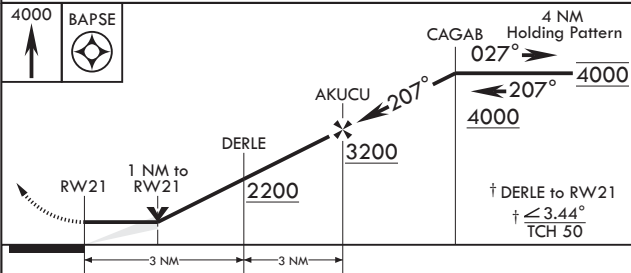
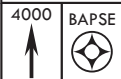
MISSED APPROACH: Climb to 4000 direct BAPSE and hold.

* Circling not authorized NW of RWY 3-21.

UNICOM
126.2 (CTAF) 257.975 (CTAF)



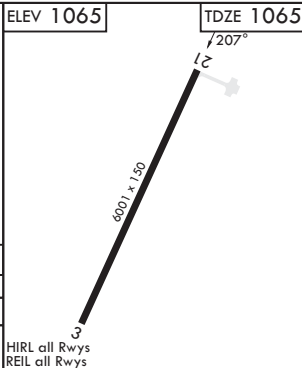
EMERG SAFE ALT 100 NM 5800



ELEV 1065

TDZE 1065

CATEGORY	A		B		C		D	
LNAV MDA	1480-1	415	(500-1)		1480-1 $\frac{1}{8}$	415	(500-1 $\frac{1}{8}$)	
C CIRCLING*	1520-1	455	(500-1)	1620-1	555	(600-1)	1640-1 $\frac{1}{2}$	1800-2 $\frac{1}{4}$
							575	735
							(600-1 $\frac{1}{2}$)	(800-2 $\frac{1}{4}$)



TULLAHOMA, TENNESSEE

35°24'N - 86°05'W

ARNOLD AFB (KAYX)

Orig 19MAY22

RNAV (GPS) RWY 21

SE-1, 05 SEP 2024 to 03 OCT 2024

SE-1, 05 SEP 2024 to 03 OCT 2024