

TULLAHOMA, TENNESSEE

RNAV (GPS) RWY 3

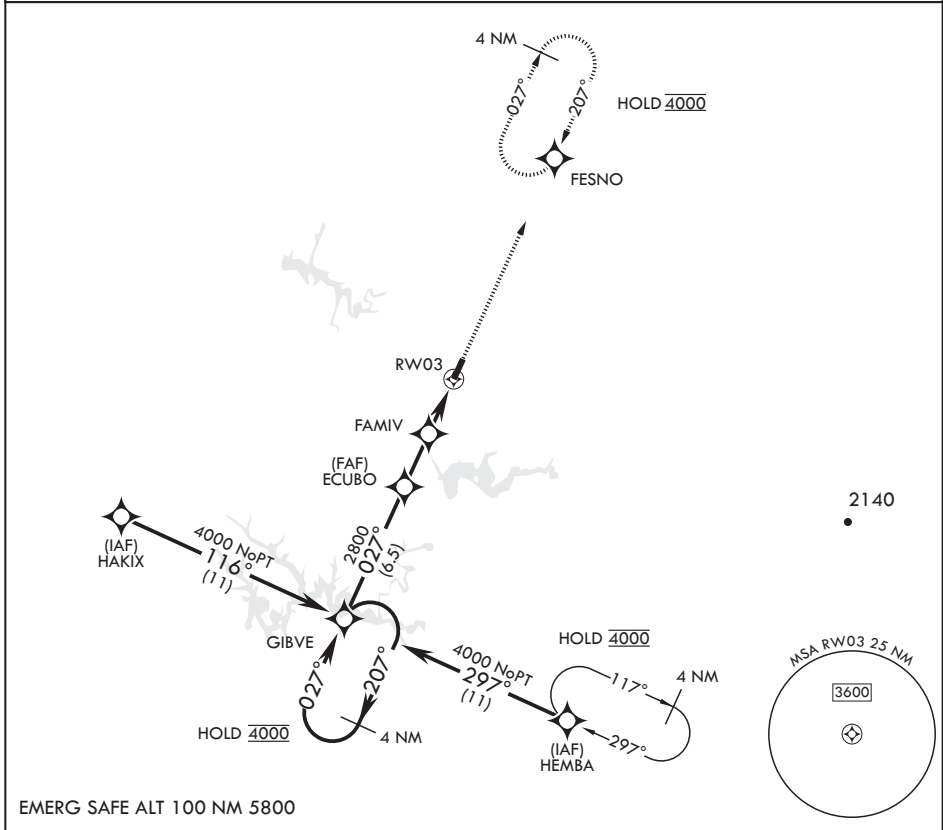
APCH CRS	Rwy Idg	6001
027°	TDZE	1065
	Arprt Elev	1065

- (USAF)

ARNOLD AFB (KAYX)

RNP APCH	MISSED APPROACH: Climb to 4000 direct FESNO and hold, continue climb-in-hold to 4000.
* Circling not authorized NW of RWY 3-21.	

UNICOM
126.2 (CTAF) 257.975 (CTAF)



EMERG SAFE ALT 100 NM 5800

4 NM Holding Pattern	GIBVE	4000	4000	4000	FESNO	ELEV 1065	TDZE 1065
† FAMIV to RW03 $3.12^\circ \geq \dagger$ TCH 40	2800 ECUBO	2000 FAMIV	1 NM to RW03 RW03	4000 FESNO	4000 FESNO	ELEV 1065	TDZE 1065
CATEGORY		A	B	C	D		
LNAV MDA		1420-1	355	(400-1)			
CIRCLING*		1520-1 455 (500-1)	1620-1 555 (600-1)	1640-1½ 575 (600-1½)	1800-2¼ 735 (800-2¼)		

8001 * 150

HIRL all Rwys
REIL all Rwys

TULLAHOMA, TENNESSEE

35°24'N - 86°05'W

ARNOLD AFB (KAYX)

Orig 19MAY22

RNAV (GPS) RWY 3

SE-1, 05 SEP 2024 to 03 OCT 2024

SE-1, 05 SEP 2024 to 03 OCT 2024