

LOC I-EYE <b>111.5</b>	APP CRS <b>211°</b>	Rwy Idg <b>4200</b>
		TDZE <b>823</b>
		Apt Elev <b>823</b>

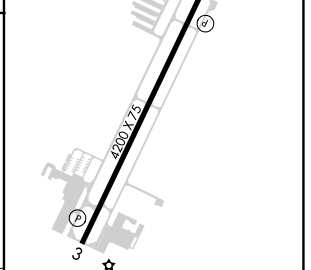
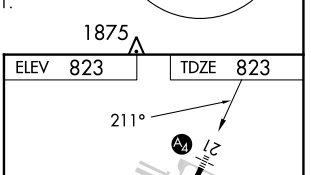
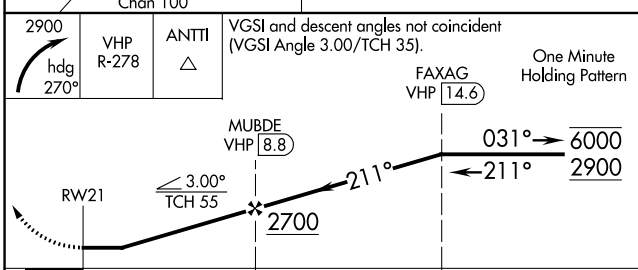
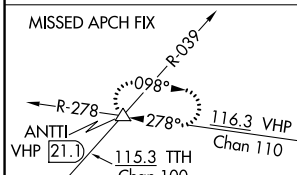
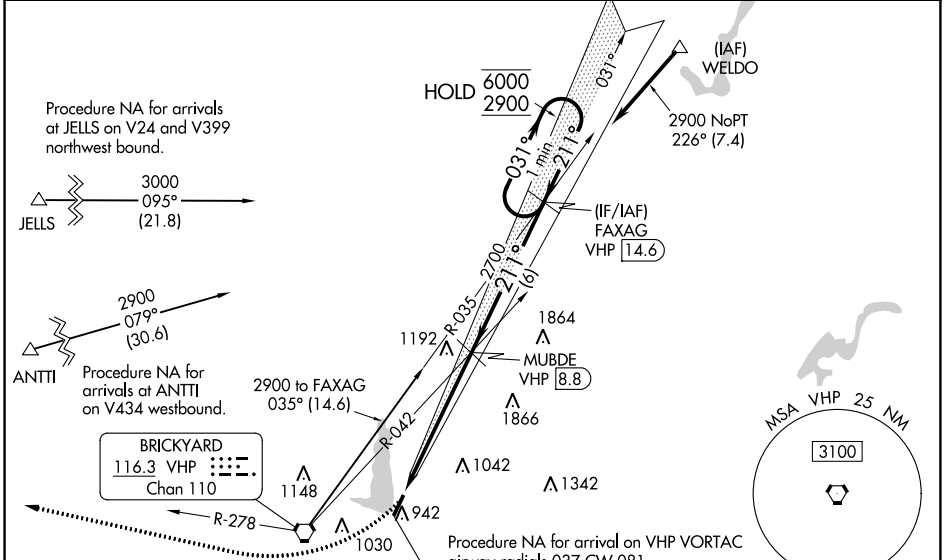
# LOC RWY 21

EAGLE CREEK AIRPARK (EYE)

RNP APCH - GPS. From ANTTI or JELLS or WELDO.  
 DME Required.  
 Rwy 21 helicopter visibility reduction below 3/4 SM NA. Inop table does not apply to S-21 Cats A and B. When local altimeter setting not received, use Indianapolis Intl altimeter setting and increase all MDAs 20 feet. For inop ALS, increase Cat C visibility to 1 1/2 SM.

MALS MISSED APPROACH: Climbing right turn to 2900 on heading 270° and VHP R-278 to ANTTI INT/VHP 21.1 DME and hold.

ASOS <b>121.575</b>	INDIANAPOLIS APP CON <b>119.05 317.8</b>	CLNC DEL <b>128.6</b>	UNICOM <b>122.8 (CTAF) 0</b>
------------------------	---	--------------------------	---------------------------------



CATEGORY	A	B	C	D
S-21	1340-1	517 (600-1)	1340-1 1/4 517 (600-1 1/4)	NA
CIRCLING	1340-1 517 (600-1)	1340-2 517 (600-2)	1500-2 677 (700-2)	NA

MIRL Rwy 3-21  
REIL Rwy 3-21

FAF to MAP 5.7 NM					
Knots	60	90	120	150	180
Min:Sec	5:42	3:48	2:51	2:17	1:54

EC-2, 05 SEP 2024 to 03 OCT 2024

EC-2, 05 SEP 2024 to 03 OCT 2024