

APP CRS 334°	Rwy Idg 4000
	TDZE 928
	Apt Elev 928

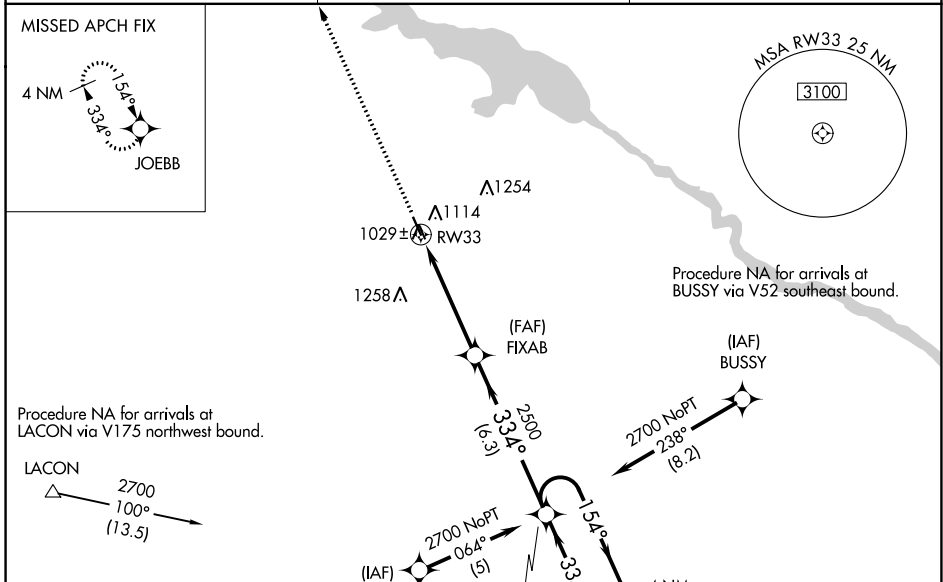
RNAV (GPS) RWY 33

KNOXVILLE MUNI (OXV)

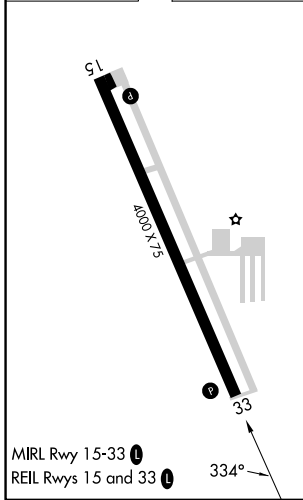
⚠ DME/DME RNP-0.3 NA. Visibility reduction by helicopters NA.
⚠ Baro-VNAV and VDP NA when using Pella altimeter setting.
 When local altimeter setting not received, use Pella altimeter setting and increase all DA 29 feet, all MDA 40 feet, LNAV/VNAV all Cats visibility 1/4 mile.
 For uncompensated Baro-VNAV systems, LNAV/VNAV NA below -16°C (4°F) or above 54°C (130°F).

MISSED APPROACH: Climb to 3000 direct JOEBB and hold.

AWOS-3 119.775	DES MOINES APP CON 123.9 307.15	UNICOM 122.8 (CTAF)
--------------------------	---	-------------------------------



ELEV 928	TDZE 928
----------	----------



3000	JOEBB	VGSI and RNAV glidepath not coincident (VGSI Angle 3.00/TCH 32).	4 NM	
		LEGWU	Holding Pattern	
*LNAV only.	*1.4 NM to RW33	FIXAB	154° 2700	
			334°	
		2500	GP 3.00° TCH 40	
	1.4 NM	3.4 NM	6.3 NM	
CATEGORY	A	B	C	D
LNAV/VNAV DA	1299-1¼	371 (400-1¼)		NA
LNAV MDA	1400-1	472 (500-1)		NA
CIRCLING	1480-1	552 (600-1)		NA

NC-3, 05 SEP 2024 to 03 OCT 2024

NC-3, 05 SEP 2024 to 03 OCT 2024