

VOR/DME AIR	APP CRS	Rwy ldg	3805
117.1	229°	TDZE	1197
Chan 118		Apt Elev	1197

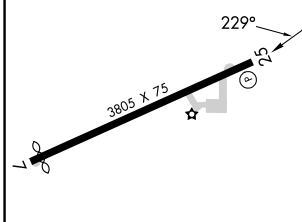
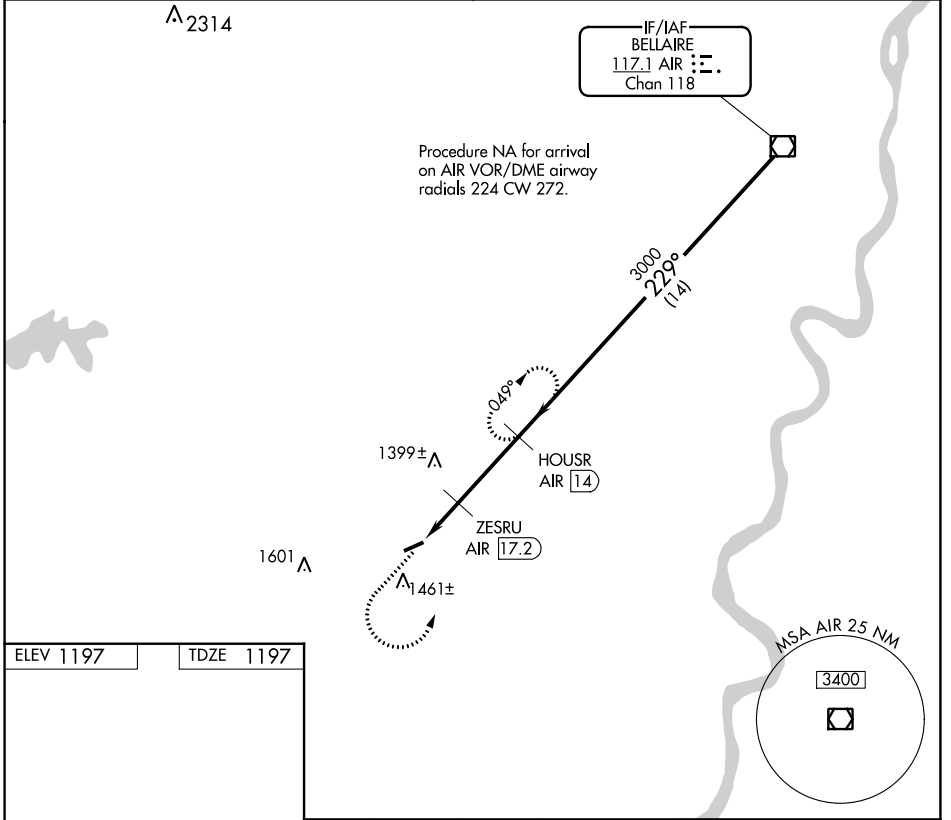
VOR/DME RWY 25

MONROE COUNTY (4G5)

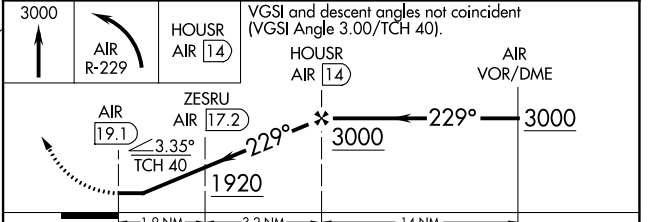
▼ Use Wheeling Ohio Co, WV alimeter setting; when not received use Parkersburg, WV alimeter setting and increase all MDA 60 feet; increase S-25 Cat C visibility 1/8 mile and Circling Cat C visibility 1/4 mile. Procedure NA at night.
▲ NA Rwy 25 helicopter visibility reduction below 1 SM NA.

MISSED APPROACH: Climb to 3000 then left turn on AIR VOR/DME R-229 to HOUSR/AIR 14 DME and hold.

CLEVELAND CENTER 126.95 239.3	UNICOM 122.8 (CTAF) 0
---	---------------------------------



ELEV 1197	TDZE 1197
REIL Rwy 25 0	MIRL Rwy 7-25 0



CATEGORY	A	B	C	D
S-25	1740-1	543 (600-1)	1740-1 5/8 543 (600-1 5/8)	NA
C CIRCLING	1860-1	663 (700-1)	1860-1 3/4 663 (700-1 3/4)	NA

EC-2, 05 SEP 2024 to 03 OCT 2024

EC-2, 05 SEP 2024 to 03 OCT 2024