

LOC/DME I-RBW 110.15 Chan 38 (Y)	APP CRS 229°	Rwy ldg TDZE Apt Elev	6002 101 101
---	------------------------	-----------------------------	---

ILS Y or LOC Y RWY 23

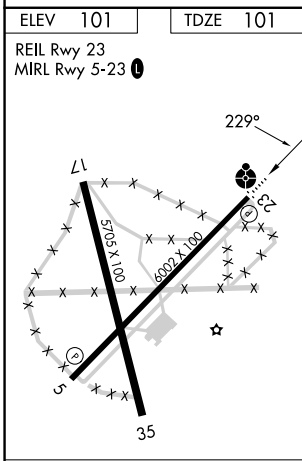
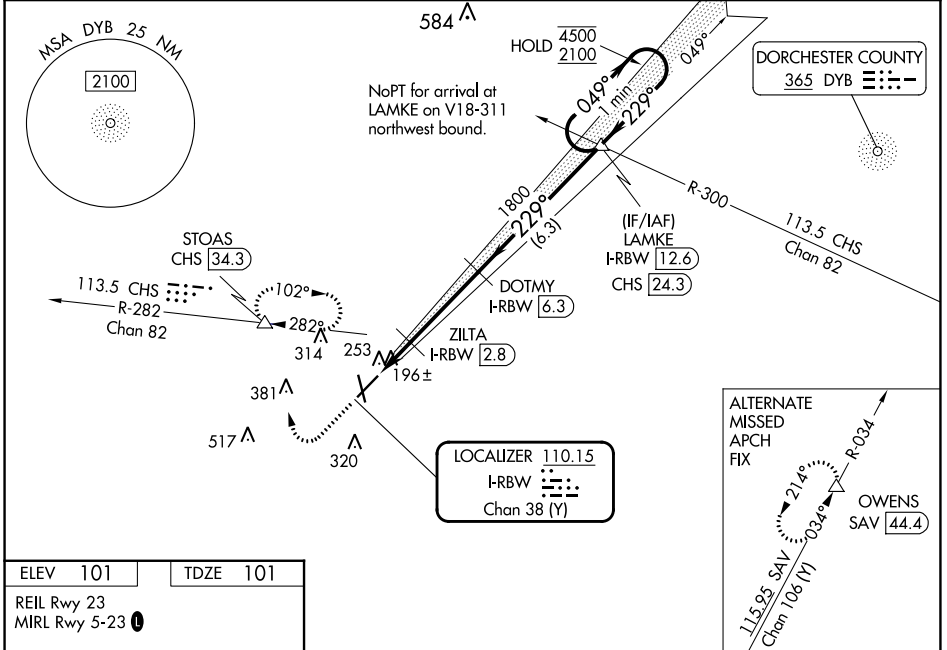
LOWCOUNTRY RGNL (R.B.W)

DME required.

ODALS

MISSED APPROACH: Climb to 700 then climbing right turn to 2000 on heading 360° and CHS VORTAC R-282 to STOAS/CHS VORTAC 34.3 DME and hold, continue climb-in-hold to 2000, or as directed by ATC.

AWOS-3PT 118.725	CHARLESTON APP CON 120.7 306.925	UNICOM 122.8 (CTAF)
----------------------------	--	-------------------------------



FAF to MAP 5.2 NM					
Knots	60	90	120	150	180
Min:Sec	5:12	3:28	2:36	2:05	1:44

700	2000	STOAS	VGSI and ILS glidepath not coincident (VGSI Angle 3.00/TCH 46).	
↑	hdg 360°	CHS R-282	DOTMY I-RBW 6.3	LAMKE I-RBW 12.6
		ZILTA I-RBW 2.8	1800	049° → 4500 ← 229° 2100
		I-RBW 1.1	680	1800
		1 NM	0.7	3.5 NM
		6.3 NM	GS 3.00° TCH 43	
CATEGORY	A	B	C	D
S-ILS 23	301-3/4 200 (200-3/4)			
S-LOC 23	460-3/4 359 (400-3/4)		460-7/8 359 (400-7/8)	
CIRCLING	620-1 519 (600-1)		700-1 1/2 599 (600-1 1/2) 700-2 599 (600-2)	

LOWCOUNTRY RGNL (R.B.W)

ILS Y or LOC Y RWY 23

SE-2, 05 SEP 2024 to 03 OCT 2024

SE-2, 05 SEP 2024 to 03 OCT 2024