

# BORRN SIX DEPARTURE (RNAV)

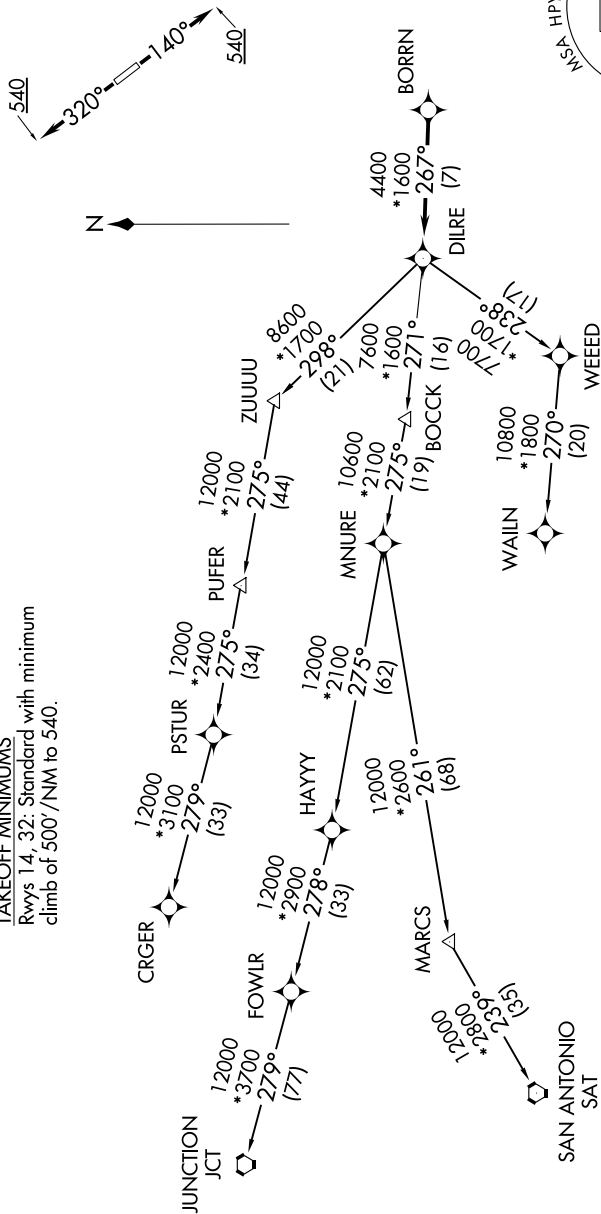
**TOP ALTITUDE:  
ASSIGNED BY ATC**

RNAV 1 - DME/DME/IRU or GPS.

RADAR required.

CTAF  
122.8  
HOUSTON DEP CON  
134.45 284.0

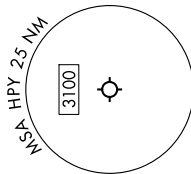
**TAKEOFF MINIMUMS**  
Rwys 14, 32: Standard with minimum  
climb of 500'/NM to 540.



**NOTE:** CRGR-TRANSITION ATC assigned only  
for aircraft departing 54T, AXH, EFD, GLS,  
HPY, IWS, LBX, LVJ, SGR, TME, T00, T41.

(NARRATIVE ON FOLLOWING PAGE)

NOTE: Chart not to scale.



# BORRN SIX DEPARTURE (RNAV)