

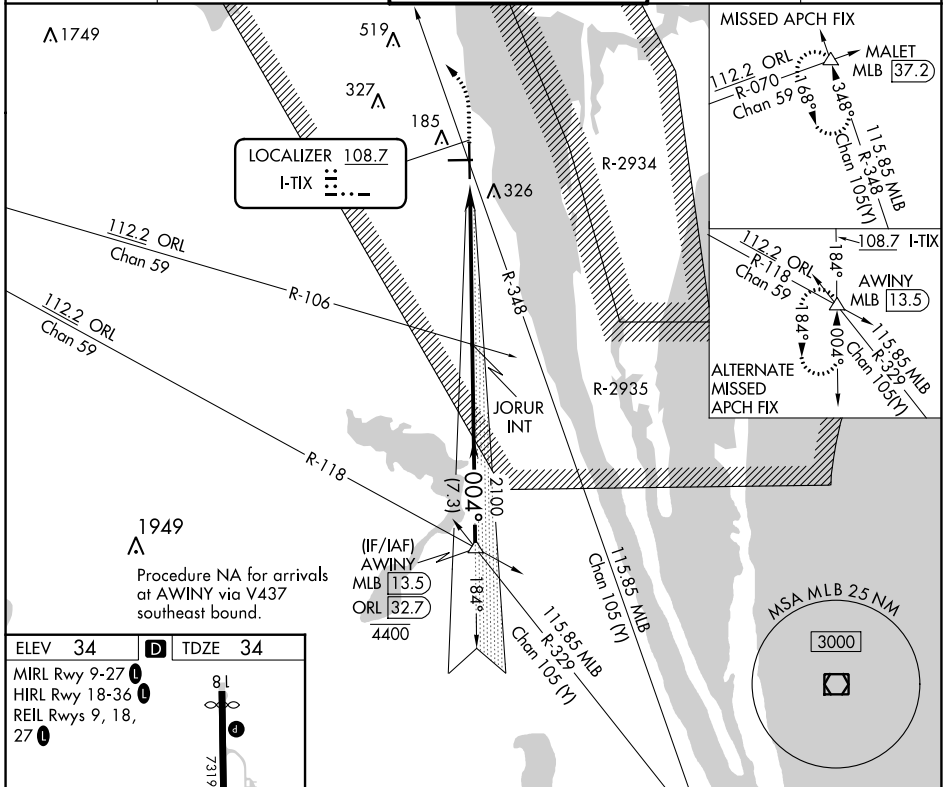
LOC I-TIX 108.7	APP CRS 004°	Rwy Idg 7244
		TDZE 34
		Apt Elev 34

ILS or LOC RWY 36

SPACE COAST RGNL(TIX)

<p>▽ For inop ALS, increase S-LOC 36 Cat C/D visibility to 1½ SM.</p> <p>△ MALSR</p>	<p>MISSED APPROACH: Climb to 500 then climbing left turn to 2000 on MLB VOR/DME R-348 to MALET INT/37.2 DME and hold.</p>
--	---

ATIS 120.625	ORLANDO APP CON 134.95 281.425	SPACE COAST TOWER ★ 118.9 (CTAF) 0	GND COM 121.85	UNICOM 122.95
------------------------	--	--	--------------------------	-------------------------



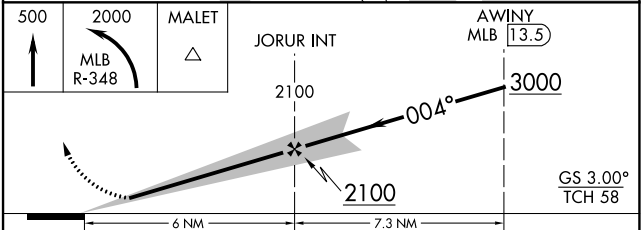
SE-3, 05 SEP 2024 to 03 OCT 2024

SE-3, 05 SEP 2024 to 03 OCT 2024

ELEV 34	D	TDZE 34
MIRL Rwy 9-27		
HIRL Rwy 18-36		
REIL Rwys 9, 18, 27		

Diagram details: RWY 36 (5000 x 100) with TWX 98 and TWY 97. FAF to MAP 6 NM. Altitudes: 81, 7319 x 1150, 36. Heading: 004° 6 NM from FAF.

Knots	60	90	120	150	180
Min:Sec	6:00	4:00	3:00	2:24	2:00



CATEGORY	A	B	C	D
S-ILS 36	234-½ 200 (200-½)			
S-LOC 36	500-½	466 (500-½)	500-1	466 (500-1)
C CIRCLING	640-1	606 (700-1)	640-1¾ 606 (700-1¾)	640-2 606 (700-2)