

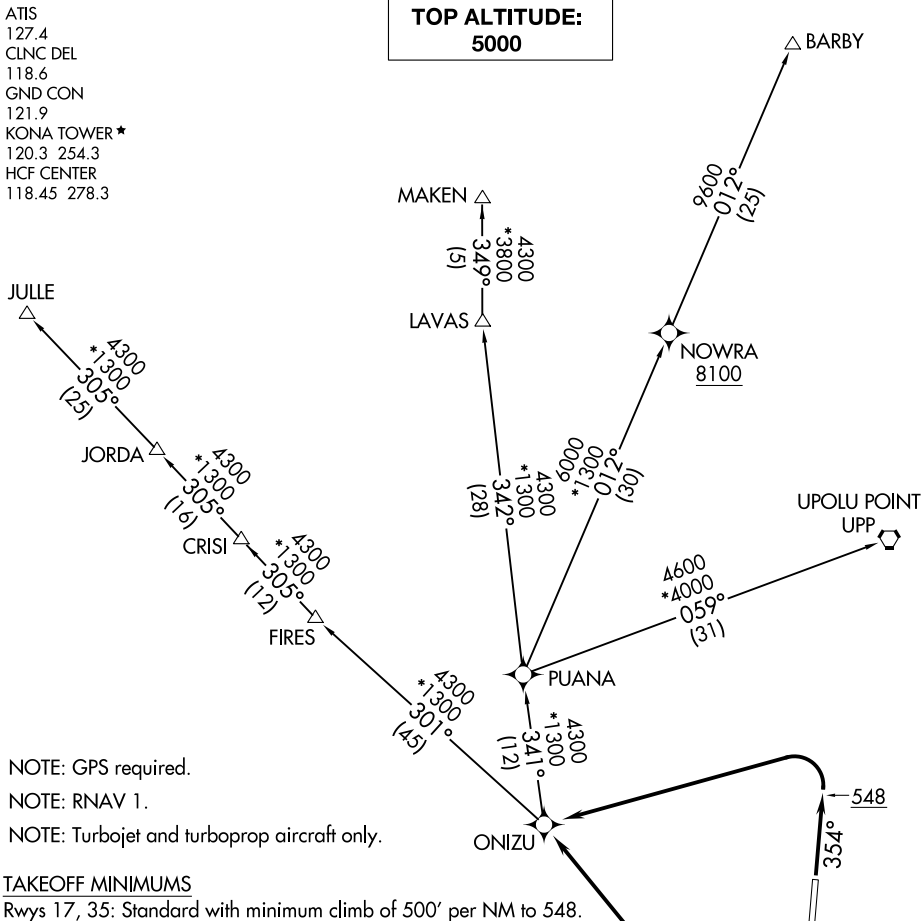
ONIZU ONE DEPARTURE (RNAV)

AL-5761 (FAA)

KAILUA/KONA, HAWAII

**TOP ALTITUDE:
5000**

ATIS
 127.4
 CLNC DEL
 118.6
 GND CON
 121.9
 KONA TOWER*
 120.3 254.3
 HCF CENTER
 118.45 278.3



NOTE: GPS required.
 NOTE: RNAV 1.
 NOTE: Turbojet and turboprop aircraft only.

TAKEOFF MINIMUMS

Rwys 17, 35: Standard with minimum climb of 500' per NM to 548.

DEPARTURE ROUTE DESCRIPTION

TAKEOFF RUNWAY 17: Climb on heading 174° to 548, then climbing right turn direct ONIZU, thence. . .

TAKEOFF RUNWAY 35: Climb on heading 354° to 548, then climbing left turn direct ONIZU, thence. . .

. . . on transition, maintain 5000, expect further clearance to filed altitude five (5) minutes after departure.

BARBY TRANSITION (ONIZU1.BARBY)

JULLE TRANSITION (ONIZU1.JULLE)

MAKEN TRANSITION (ONIZU1.MAKEN)

UPOLU POINT TRANSITION (ONIZU1.UPP)

NOTE: Chart not to scale.

ONIZU ONE DEPARTURE (RNAV)

KAILUA/KONA, HAWAII