

WAAS CH <b>42813</b> <b>W36A</b>	APP CRS <b>357°</b>	Rwy Idg TDZE <b>192</b> Apt Elev <b>213</b>	<b>5500</b>
--	------------------------	---	-------------

# RNAV (GPS) RWY 36

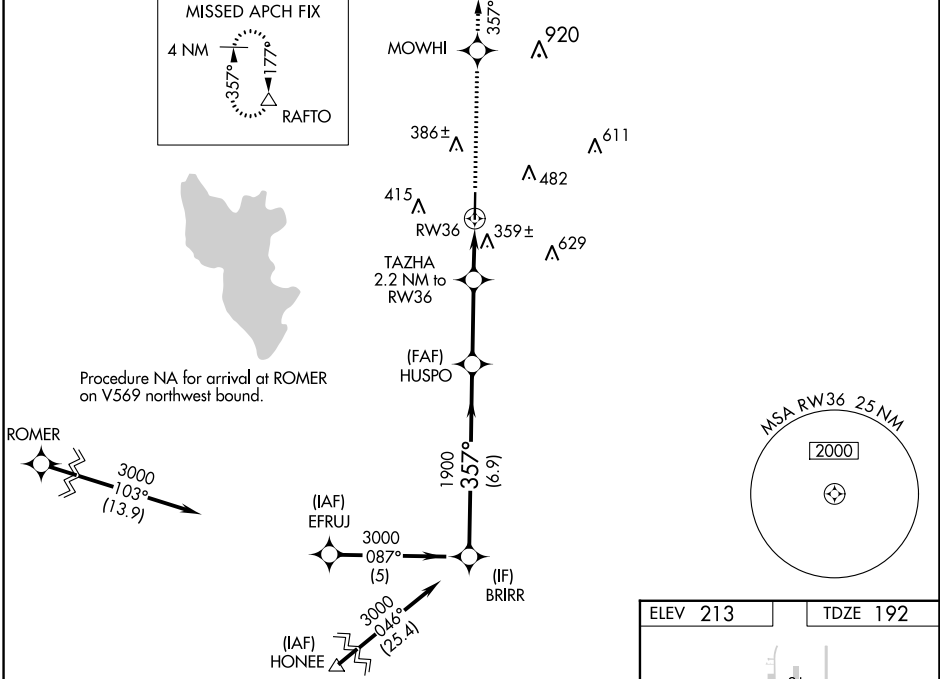
JASPER COUNTY/BELL FLD (JAS)

RNP APCH-GPS

**⚠** Baro-VNAV NA when using De Ridder altimeter setting. For uncompensated Baro-VNAV systems, LNAV/VNAV NA below -15°C or above 54°C. Rwy 36 helicopter visibility reduction below ¼ SM NA. VDP NA when using De Ridder altimeter setting. When local altimeter setting not received, use De Ridder altimeter setting and increase LPV DA to 681 feet and all visibilities ¼ SM, increase LNAV/VNAV DA to 762 feet and all visibilities ¼ SM, increase all MDAs 100 feet and LNAV visibility Cat C ½ SM, and Circling visibility Cat C ¼ SM.

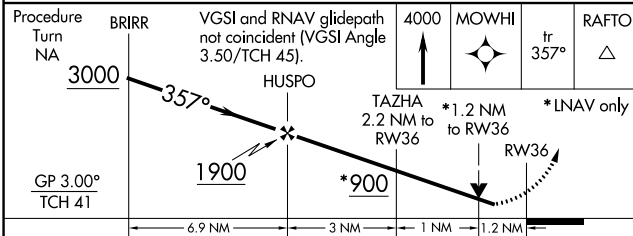
**MISSED APPROACH:**  
Climb to 4000 direct MOWHI and via track 357° to RAFTO and hold.

AWOS-3 <b>118.375</b>	HOUSTON CENTER <b>126.95 363.05</b>	UNICOM <b>122.8 (CTAF) ①</b>
--------------------------	--	---------------------------------

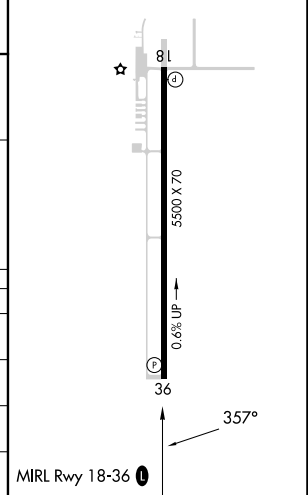


Procedure NA for arrival at ROMER on V569 northwest bound.

ELEV 213	TDZE 192
----------	----------



CATEGORY	A	B	C	D
LPV DA	594-1 ½ 402 (400-1 ½)			NA
LNAV/VNAV DA	675-1 ¾ 483 (500-1 ¾)			NA
LNAV MDA	680-1	488 (500-1)	680-1 ¾ 488 (500-1 ¾)	NA
CIRCLING	740-1	527 (600-1)	800-1 ½ 587 (600-1 ½)	NA



SC-5, 05 SEP 2024 to 03 OCT 2024

SC-5, 05 SEP 2024 to 03 OCT 2024