

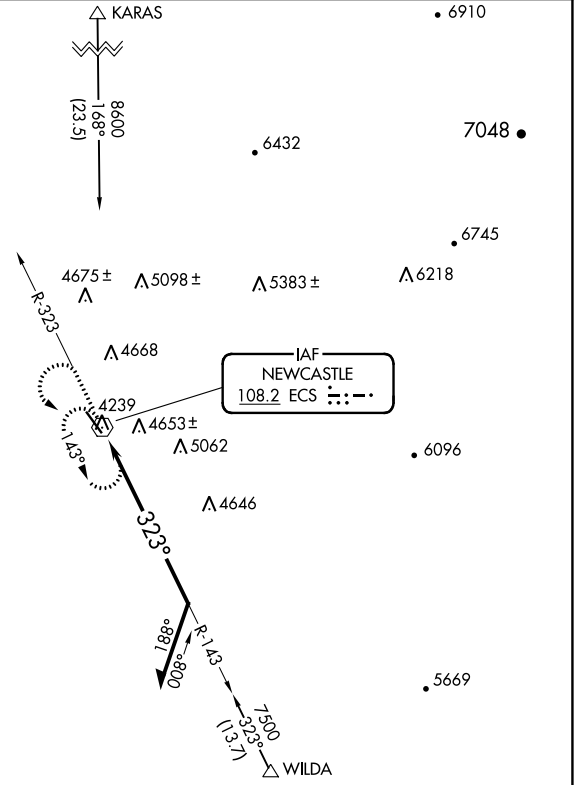
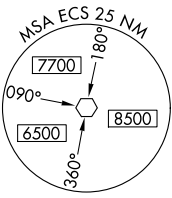
VOR ECS <b>108.2</b>	APP CRS <b>323°</b>	Rwy Idg TDZE Apt Elev	<b>5310</b> <b>4176</b> <b>4176</b>
-------------------------	------------------------	-----------------------------	---

**VOR RWY 32**  
MONDELL FLD (ECS)

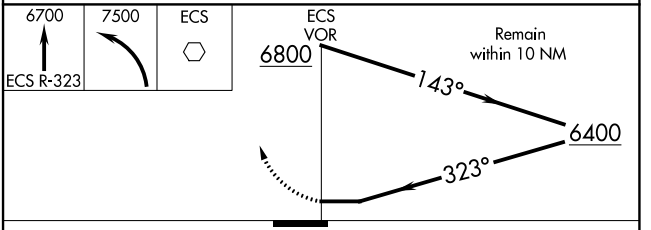
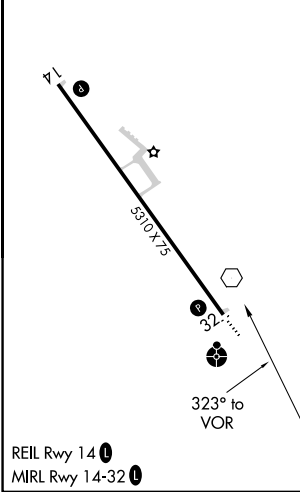
**⚠** When Newcastle altimeter setting not received, procedure NA. Circling NA northeast of Rwy 14-32.

**ODALS** MISSED APPROACH: Climb to 6700 on ECS VOR R-323 then climbing left turn to 7500 direct ECS VOR and hold, continue climb-in-hold to 7500.

AWOS-3PT <b>118.0</b>	DENVER CENTER <b>127.95 338.2</b>	UNICOM <b>122.8 (CTAF) 0</b>
--------------------------	--------------------------------------	---------------------------------



ELEV 4176	TDZE 4176
-----------	-----------



CATEGORY	A	B	C	D
S-32	4980-3/4 804 (900-3/4)	4980-1 804 (900-1)	4980-2 1/2	804 (900-2 1/2)
<b>CIRCLING</b>	4980-1 804 (900-1)	4980-1 1/4 804 (900-1 1/4)	4980-2 1/2 804 (900-2 1/2)	5000-2 3/4 824 (900-2 3/4)

NW-1, 05 SEP 2024 to 03 OCT 2024

NW-1, 05 SEP 2024 to 03 OCT 2024