

APP CRS	Rwy Idg	3498
025°	TDZE	641
	Apt Elev	641

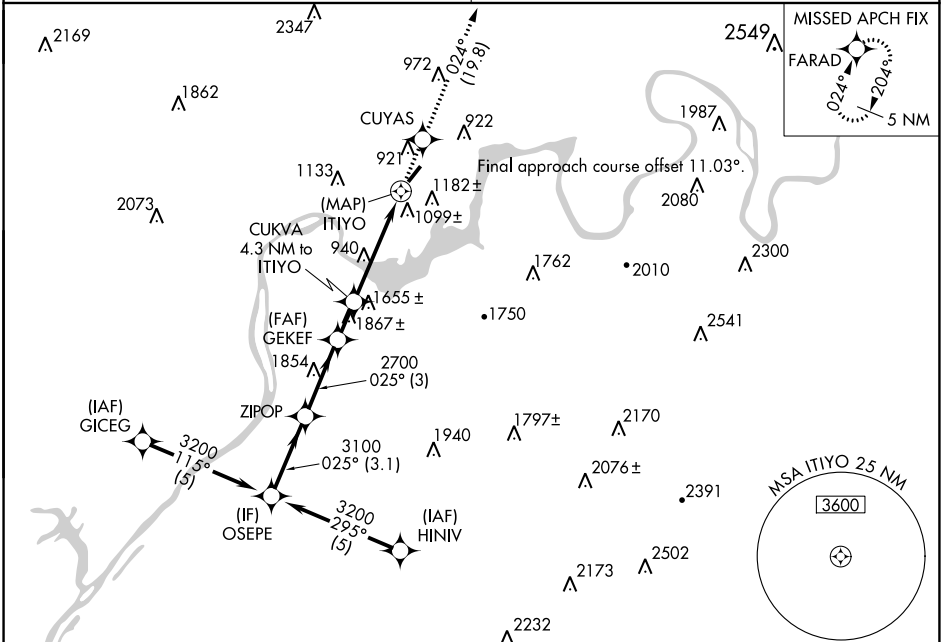
RNAV (GPS) RWY 4

MARION COUNTY/BROWN FLD (A/P)

RNP APCH-GPS
 Procedure NA at night. Rwy 4 helicopter visibility reduction below 1 SM NA.
 Obtain local altimeter setting on CTAF; when not received, use Chattanooga altimeter setting and increase all MDAs 60 feet and LNAV Cat A visibility ¼ SM.

MISSED APPROACH: Climb to 4000 direct CUYAS and on track 024° to FARAD and hold.

CHATTANOOGA APP CON *	UNICOM
119.2 323.075	122.8 (CTAF)



SE-1, 05 SEP 2024 to 03 OCT 2024

SE-1, 05 SEP 2024 to 03 OCT 2024

ELEV	641	TDZE	641
------	-----	------	-----

Visual Segment - Obstacles								
OSEPE	ZIPOP	GEKEF	CUKVA	ITIYO				
3200	3100	2700	2240	2240				
3.1 NM	3 NM	1.5 NM	4.3 NM	0.5 NM				
<table border="1"> <tr> <td>4000</td> <td>CUYAS</td> <td>tr 024°</td> <td>FARAD</td> </tr> </table>					4000	CUYAS	tr 024°	FARAD
4000	CUYAS	tr 024°	FARAD					
CATEGORY	A	B	C	D				
LNAV MDA	1500-1 859 (900-1)	1500-1¼ 859 (900-1¼)	1500-2½ 859 (900-2½)	NA				
CIRCLING	1560-1¼ 919 (1000-1¼)	1840-1½ 1199 (1200-1½)	1860-3 1219 (1300-3)	NA				

