

WAAS CH <b>70501</b> <b>W28A</b>	APP CRS <b>279°</b>	Rwy Idg TDZE Apt Elev	<b>2502</b> <b>108</b> <b>108</b>
--	------------------------	-----------------------------	---

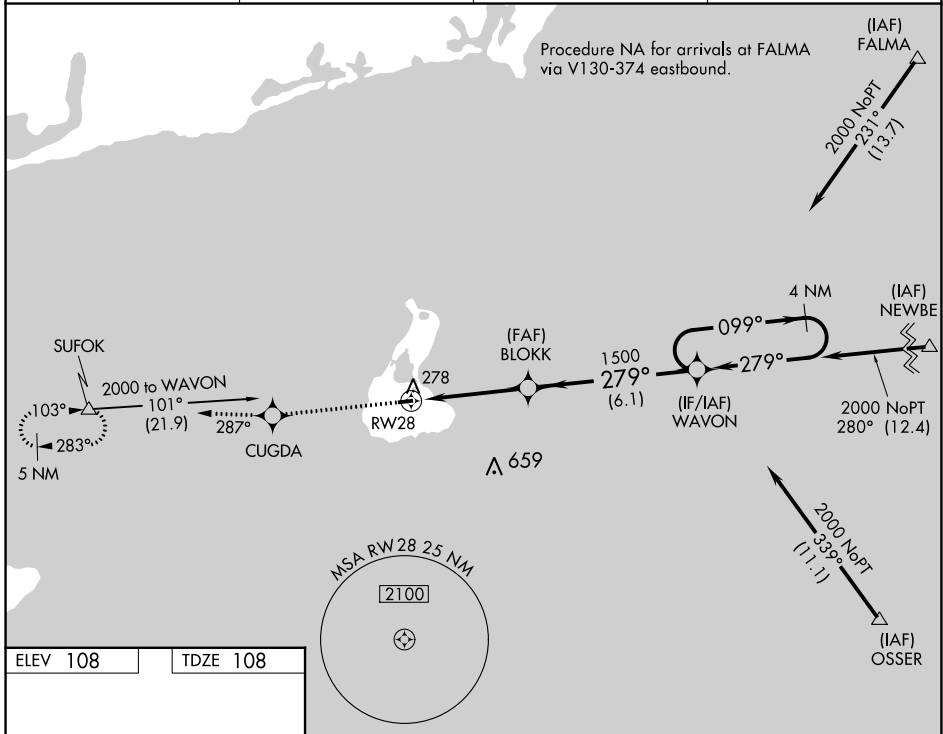
# RNAV (GPS) RWY 28

BLOCK ISLAND STATE (BID)

**⚠** DME/DME RNP-0.3 NA. If local altimeter setting not received, use Westerly State altimeter setting and increase all DAs/MDAs 40 feet. Baro-VNAV and VDP NA when using Westerly State altimeter setting. For uncompensated Baro-VNAV systems, LNAV/VNAV NA below -15°C (5°F) or above 54°C (130°F).

**⚠** MISSED APPROACH: Climb to 1500 direct CUGDA and on track 287° to SUFOK and hold.

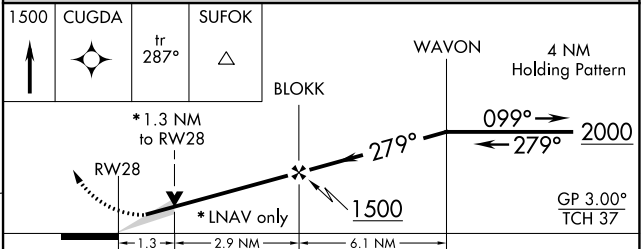
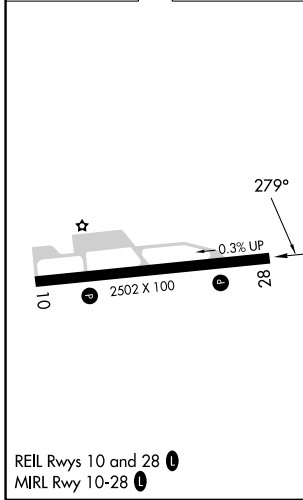
AWOS-3PT <b>134.775</b>	PROVIDENCE APP CON ★ <b>125.75 319.2</b>	CLNC DEL <b>120.1</b>	UNICOM <b>123.0 (CTAF) 0</b>
----------------------------	---	--------------------------	---------------------------------



NE-1, 05 SEP 2024 to 03 OCT 2024

NE-1, 05 SEP 2024 to 03 OCT 2024

ELEV 108	TDZE 108
----------	----------



CATEGORY	A	B	C	D
LPV DA		358-1	250 (300-1)	NA
LNAV/VNAV DA		570-1¼	462 (500-1¼)	NA
LNAV MDA	540-1	432 (500-1)	540-1¼ 432 (500-1¼)	NA
CIRCLING	640-1	532 (600-1)	640-1½ 532 (600-1½)	NA