

| | |
|------------------------|-------------------------|
| APP CRS 236° | Rwy Idg 3000 |
| | TDZE 1022 |
| | Apt Elev 1031 |

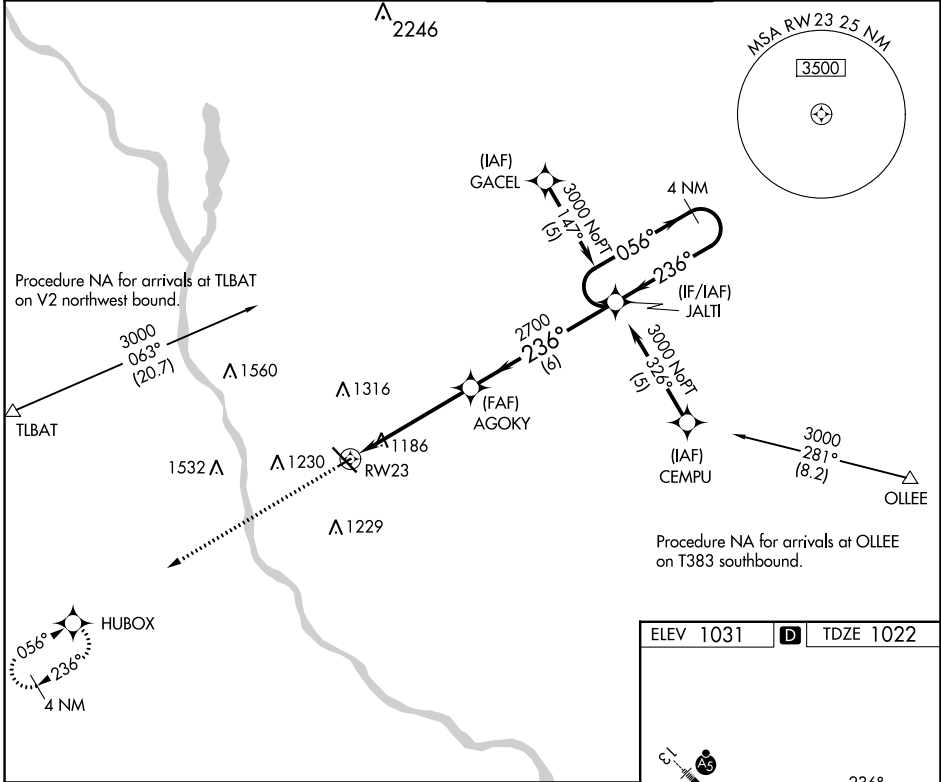
RNAV (GPS) RWY 23

ST CLOUD RGNL (STC)

⚠ Rwy 23 helicopter visibility reduction below 3/4 SM NA. DME/DME RNP-0.3 NA. VDP NA when using Little Falls altimeter setting. When local altimeter setting not received, use Little Falls altimeter setting and increase all MDA 80 feet and increase LNAV Cat C visibility 3/8 SM and Circling Cat C visibility 1/4 SM.

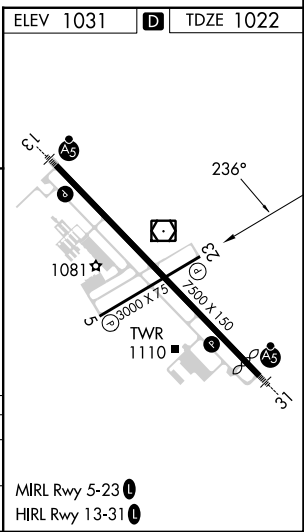
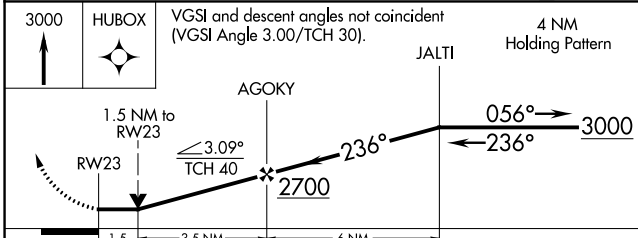
MISSED APPROACH: Climb to 3000 direct HUBOX and hold.

| | | | |
|------------------------|---|---|--------------------------|
| ATIS 119.375 | MINNEAPOLIS CENTER 121.05 235.775 | ST. CLOUD TOWER ★ 118.25 (CTAF) 0 | GND CON 123.75 |
|------------------------|---|---|--------------------------|



NC-1, 05 SEP 2024 to 03 OCT 2024

NC-1, 05 SEP 2024 to 03 OCT 2024



| CATEGORY | A | B | C | D |
|----------|--------|-------------|-------------------------------|----|
| LNAV MDA | 1540-1 | 518 (600-1) | 1540-1 3/8 518 (600-1 3/8) | NA |
| CIRCLING | 1540-1 | 509 (600-1) | 1620-1 1/2 589 (600-1 1/2) | NA |