


WAAS CH 61213 W31A	APP CRS 313°	Rwy Idg TDZE Apt Elev	7000 1020 1031
--	------------------------	-----------------------------	---

RNAV (GPS) RWY 31

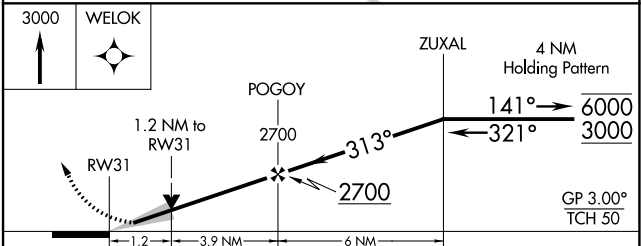
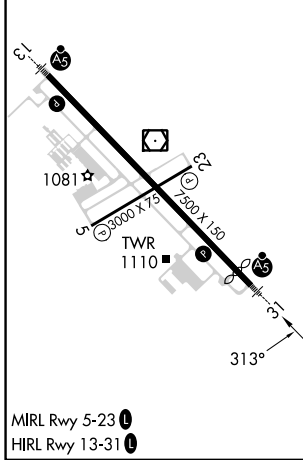
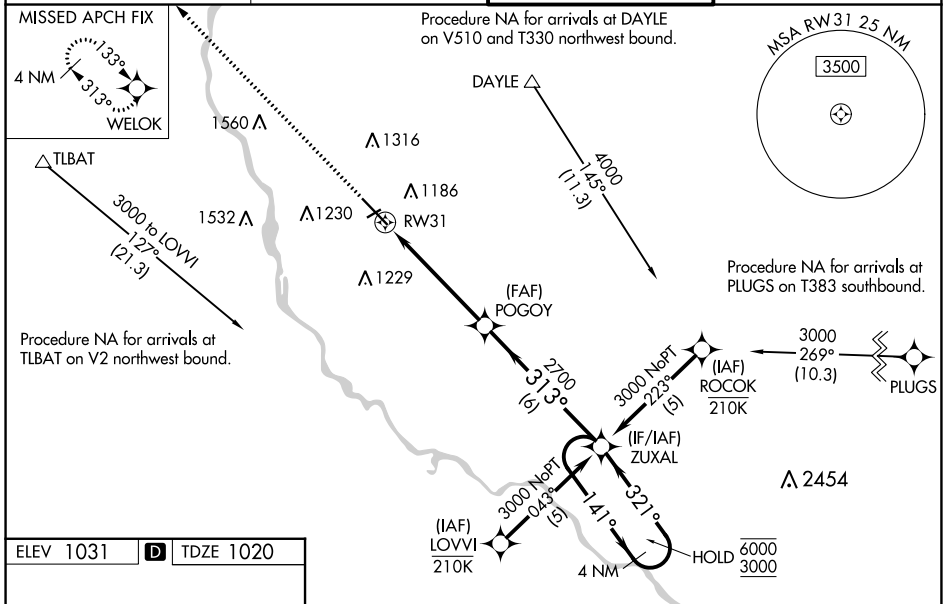
ST CLOUD RGNL (STC)

RNP APCH - GPS.

⚠ Baro-VNAV and VDP NA when using Little Falls altimeter setting. For uncompensated Baro-VNAV systems, LNAV/VNAV NA below -21°C or above 54°C. For inop ALS when using Little Falls altimeter setting, increase LPV all Cats visibility to 7/8 SM and LNAV/VNAV all Cats visibility to 1 3/8 SM and LNAV Cats C and D visibility to 1 3/8 SM. When local altimeter setting not received, use Little Falls altimeter setting, increase LPV DA to 1296 feet, increase LNAV/VNAV DA to 1503 feet and all visibilities 1/4 SM; increase all MDAs 80 feet and LNAV visibility Cat C and D 1/4 SM, and Circling visibility Cat C and D 1/4 SM. For inop ALS, increase LNAV/VNAV visibility all Cats to 1 3/8 SM.

MALSRS
 MISSED APPROACH: Climb to 3000 direct WELOK and hold.

ATIS 119.375	MINNEAPOLIS CENTER 121.05 235.775	ST. CLOUD TOWER * 118.25 (CTAF) 0	GND CON 123.75
-------------------------------	--	--	---------------------------------



CATEGORY	A	B	C	D
LPV DA		1220-1/2	200 (200-1/2)	
LNAV/VNAV DA		1427-3/4	407 (400-3/4)	
LNAV MDA	1460-1/2	440 (500-1/2)	1460-3/4	440 (500-3/4)
CIRCLING	1500-1	469 (500-1)	1620-1 1/2	1860-2 3/4
			589 (600-1 1/2)	829 (900-2 3/4)

NC-1, 05 SEP 2024 to 03 OCT 2024

NC-1, 05 SEP 2024 to 03 OCT 2024