

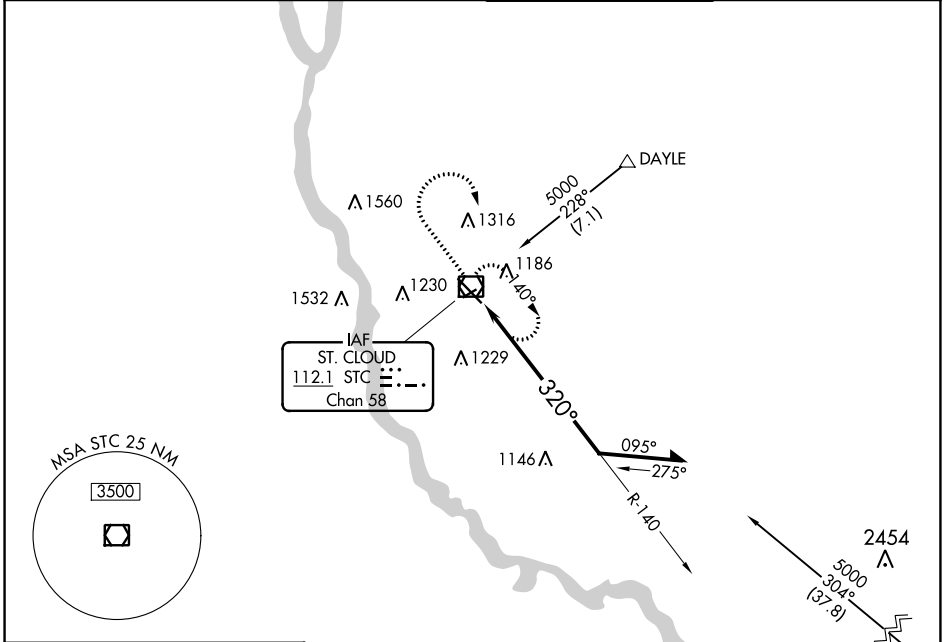
VOR/DME STC 112.1 Chan 58	APP CRS 320°	Rwy Idg TDZE 7000 1020 Apt Elev 1031
---	------------------------	---

VOR RWY 31

ST CLOUD RGNL (STC)

For inop ALS, increase S-31 Cat C and D visibility to 1 3/8 SM.		MALSR 	MISSED APPROACH: Climb to 2700 then right turn direct STC VOR/DME and hold.
---	--	-----------	---

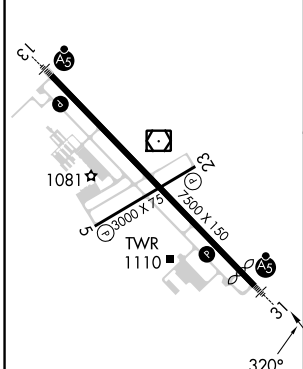
ATIS 119.375	MINNEAPOLIS CENTER 121.05 235.775	ST. CLOUD TOWER ★ 118.25 (CTAF)	GND CON 123.75
------------------------	---	---	--------------------------



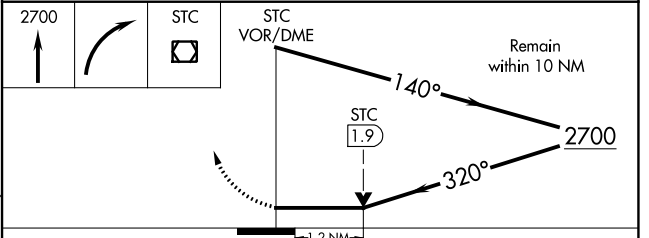
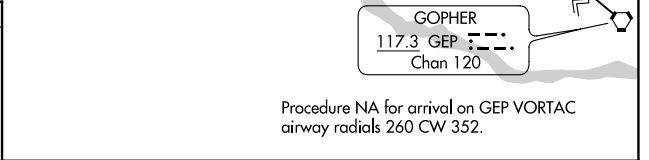
NC-1, 05 SEP 2024 to 03 OCT 2024

NC-1, 05 SEP 2024 to 03 OCT 2024

ELEV 1031	D	TDZE 1020
-----------	----------	-----------



MIRL Rwy 5-23	
HIRL Rwy 13-31	



CATEGORY	A	B	C	D
S-31	1460-1/2	440 (500-1/2)	1460-3/4 440 (500-3/4)	1460-1 440 (500-1)
CIRCLING	1500-1	469 (500-1)	1620-1 1/2 589 (600-1 1/2)	1860-2 3/4 829 (900-2 3/4)