

WAAS CH 42838 W22A	APP CRS 224°	Rwy Idg TDZE Apt Elev	5001 979 979
--	------------------------	-----------------------------	---

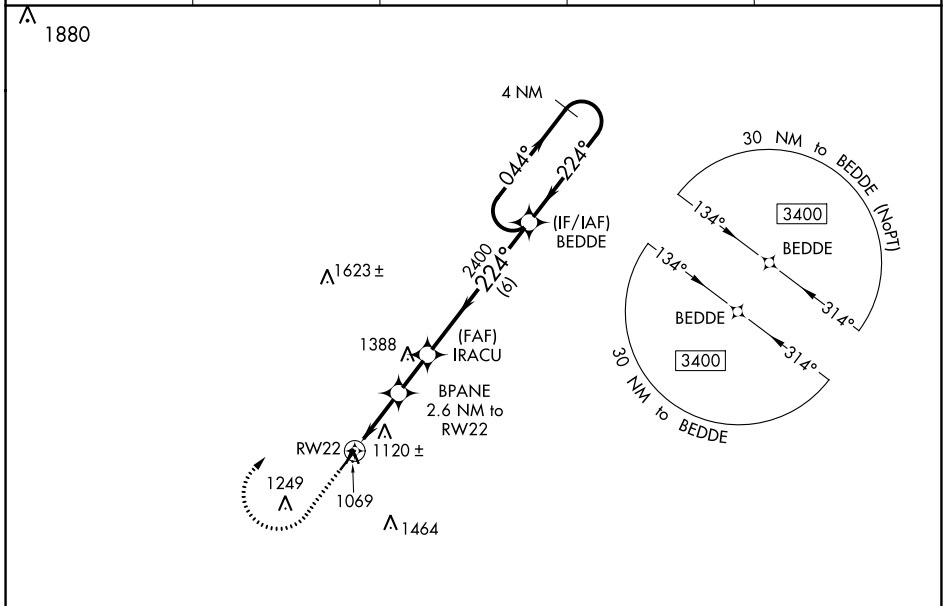
RNAV (GPS) RWY 22

RICHARD DOWNING (I40)

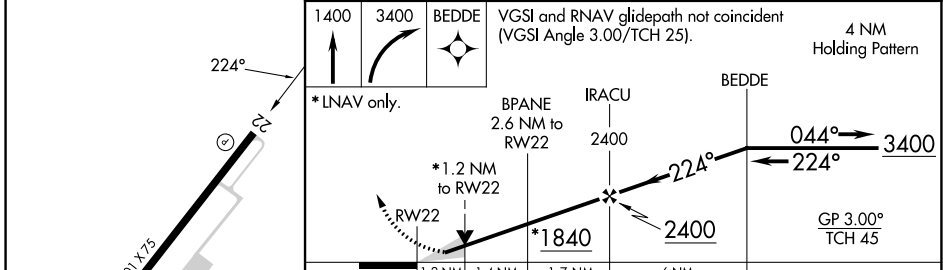
▽ For uncompensated Baro-VNAV systems, LNAV/VNAV NA below -16°C (4°F) or above 54°C (130°F). Baro-VNAV and VDP NA when using Zanesville altimeter setting.
△ NA DME/DME RNP-0.3 NA. When local altimeter setting not received, use Zanesville altimeter setting and increase LPV DA to 1501 feet and all visibilities ¼ SM, increase LNAV/VNAV DA to 1501 feet and all visibilities ½ SM, increase all MDA 80 feet and LNAV Cat C/D visibility ¼ SM, Circling Cat C/D visibility ½ SM.

MISSED APPROACH: Climb to 1400 then climbing right turn to 3400 direct BEDDE and hold.

AWOS-3 118.875	INDIANAPOLIS CENTER 124.45 323.275	GCO 121.725	UNICOM 123.0 (CTAF)	122.9 0
--------------------------	--	-----------------------	-------------------------------	-----------------------



ELEV 979	TDZE 979
----------	----------



CATEGORY	A	B	C	D
LPV DA		1229-¾	250 (300-¾)	
LNAV/VNAV DA		1439-1½	460 (500-1½)	
LNAV MDA	1380-1	401 (500-1)	1380-1½	401 (500-1½)
C CIRCLING	1440-1 461 (500-1)	1520-1 541 (600-1)	1780-2¼ 801 (900-2¼)	1780-2½ 801 (900-2½)

EC-2, 05 SEP 2024 to 03 OCT 2024

EC-2, 05 SEP 2024 to 03 OCT 2024