

WAAS CH <b>49017</b> <b>W03A</b>	APP CRS <b>029°</b>	Rwy Idg <b>4400</b> TDZE <b>410</b> Apt Elev <b>416</b>
--	------------------------	---

# RNAV (GPS) RWY 3

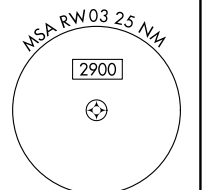
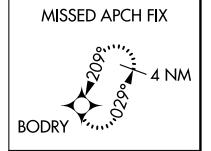
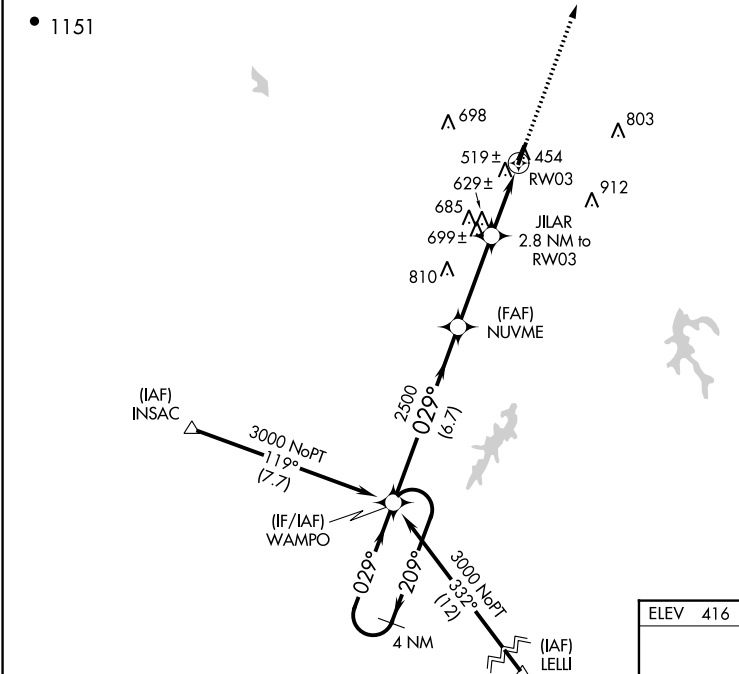
FARMVILLE RGNL (FVX)

RNP APCH-GPS.

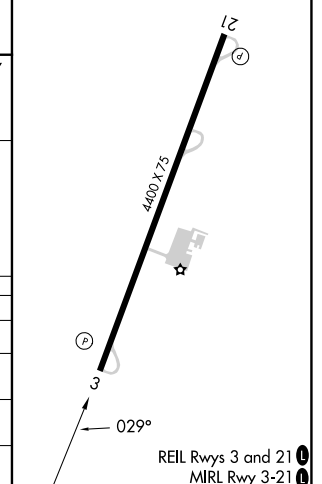
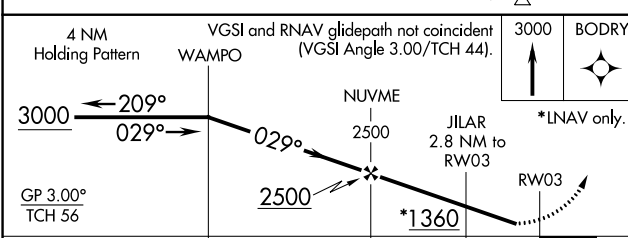
**⚠** Baro-VNAV NA when using Lynchburg Rgnl/Preston Glenn Fld altimeter setting. For uncompensated Baro-VNAV systems, LNAV/VNAV NA below -15°C or above 54°C. Straight-in/Circling Rwy 3 procedure NA at night. When local altimeter setting not received, use Lynchburg Rgnl/Preston Glenn Fld altimeter setting and increase LPV DA to 878 feet and all visibilities  $\frac{3}{8}$  SM. Increase LNAV/VNAV DA to 970 feet and all visibilities  $\frac{1}{2}$  SM. Increase all MDAs 160 feet and LNAV visibility Cat C  $\frac{1}{4}$  SM, and Circling visibility Cat C  $\frac{1}{2}$  SM. Rwy 3 helicopter visibility reduction below 1 SM NA.

**MISSED APPROACH:**  
Climb to 3000 direct BODRY and hold.

AWOS-3 <b>132.725</b>	ROANOKE APP CON <b>135.0 254.325</b>	UNICOM <b>122.8 (CTAF) 0</b>
--------------------------	---	---------------------------------



ELEV 416	TDZE 410
----------	----------



CATEGORY	A	B	C	D
LPV DA	720-1 310 (400-1)			NA
LNAV/VNAV DA	812-1 $\frac{1}{8}$ 402 (400-1 $\frac{1}{8}$ )			NA
LNAV MDA	880-1 470 (500-1)		880-1 $\frac{3}{8}$ 470 (500-1 $\frac{3}{8}$ )	NA
CIRCLING	900-1 484 (500-1)		1000-1 $\frac{1}{2}$ 584 (600-1 $\frac{1}{2}$ )	NA

NE-3, 05 SEP 2024 to 03 OCT 2024

NE-3, 05 SEP 2024 to 03 OCT 2024