

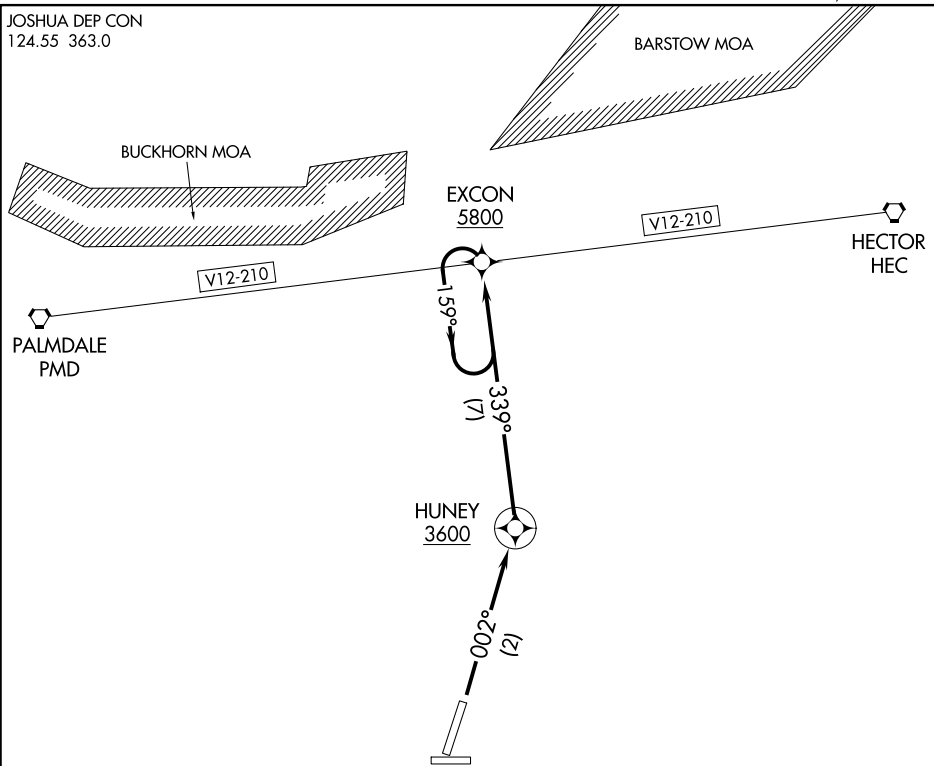
(EXCON1 .EXCON) 23082

# EXCON ONE DEPARTURE (OBSTACLE) (RNAV)

AL-5822 (FAA)

APPLE VALLEY (APV)  
APPLE VALLEY, CALIFORNIA

JOSHUA DEP CON  
124.55 363.0



NOTE: GPS required.

NOTE: RNAV 1.

### TAKEOFF MINIMUMS

Rwy 36: 300-1 or standard with a minimum climb gradient of 340' per NM until 5800'.

NOTE: Chart not to scale.

### DEPARTURE ROUTE DESCRIPTION

TAKEOFF RUNWAY 36: Climb via 002° course to HUNEY WP, then 339° course to EXCON WP, then climb in EXCON WP holding pattern (hold S left turns 339° inbound) to 7500' MSL then proceed on course.

# EXCON ONE DEPARTURE (OBSTACLE) (RNAV)

(EXCON1 .EXCON) 15JUN00

APPLE VALLEY, CALIFORNIA  
APPLE VALLEY (APV)

SW-3, 05 SEP 2024 to 03 OCT 2024

SW-3, 05 SEP 2024 to 03 OCT 2024