

WAAS CH <b>82019</b> <b>W02A</b>	APP CRS <b>024°</b>	Rwy Idg <b>5000</b> TDZE <b>890</b> Apt Elev <b>892</b>
--	------------------------	---

# RNAV (GPS) RWY 2

NEVADA MUNI (NVD)

RNP APCH - GPS.

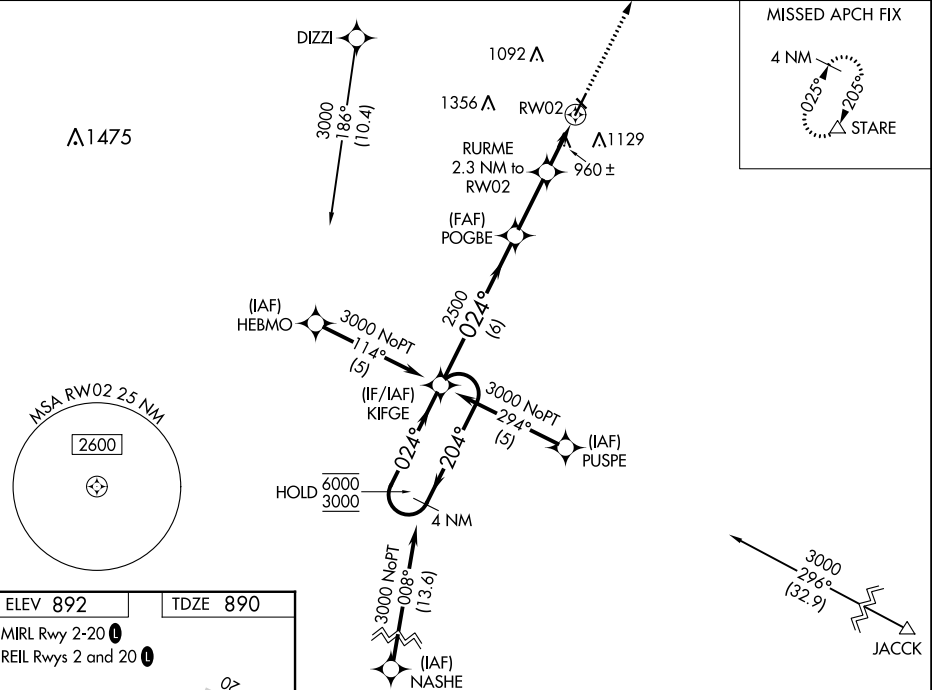
**NA** Circling NA to Rwy 13 and 31. Baro-VNAV and VDP NA when using Joplin altimeter setting. For uncompensated Baro-VNAV systems, LNAV/VNAV NA below -16°C or above 54°C. When local altimeter setting not received, use Joplin altimeter setting: increase LPV DA to 1200 feet; increase LNAV/VNAV DA to 1329 feet and all visibilities ¼ SM; increase all MDAs 120 feet and LNAV visibility Cat C ¾ SM, and Circling visibility Cat C ¼ SM.

**MISSED APPROACH:**  
Climb to 3000 direct STARE and hold.

AWOS-3PT  
**119.175**

KANSAS CITY CENTER  
**125.55 327.0**

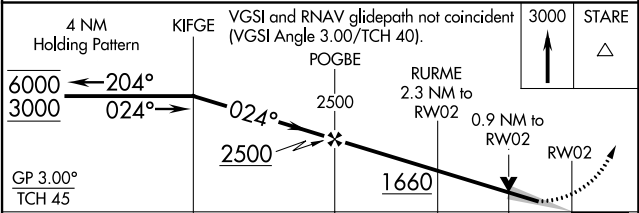
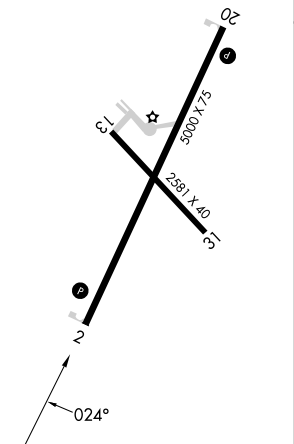
UNICOM  
**122.8 (CTAF) 0**



MISSED APCH FIX



ELEV <b>892</b>	TDZE <b>890</b>
MIRL Rwy 2-20 <b>0</b>	
REIL Rwys 2 and 20 <b>0</b>	



CATEGORY	A	B	C	D
LPV DA	1090-1	200 (200-1)		NA
LNAV/VNAV DA	1219-1	329 (400-1)		NA
LNAV MDA	1220-1	330 (400-1)		NA
CIRCLING	1260-1 368 (400-1)	1440-1 548 (600-1)	1440-1½ 548 (600-1½)	NA

NC-3, 05 SEP 2024 to 03 OCT 2024

NC-3, 05 SEP 2024 to 03 OCT 2024