

VORTAC ARG 114.5 Chan 92	APP CRS 197°	Rwy Idg 5002 TDZE 239 Apt Elev 239
--	------------------------	---

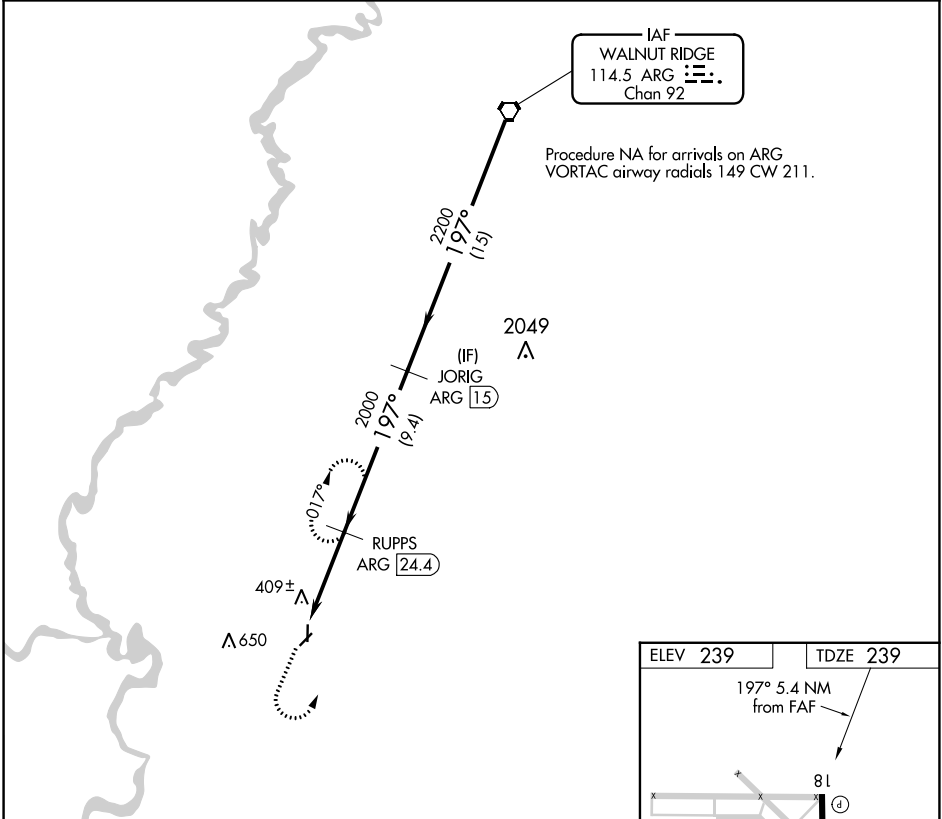
VOR RWY 18

NEWPORT RGNL (M19)

⚠ When local altimeter setting not received, use Batesville altimeter setting and increase all MDAs 100 feet.
⚠ DME required.

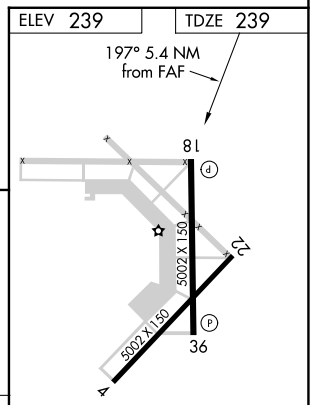
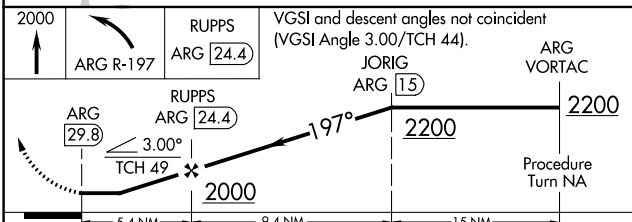
MISSED APPROACH: Climb to 2000 then left turn on ARG VORTAC R-197 to RUPPS/24.4 DME and hold.

AWOS-3PT 118.15	MEMPHIS CENTER 120.075 289.4	UNICOM 122.8 (CTAF) 📻
---------------------------	--	--



SC-1, 05 SEP 2024 to 03 OCT 2024

SC-1, 05 SEP 2024 to 03 OCT 2024



CATEGORY	A	B	C	D
S-18	1300-1¼ 1061 (1100-1¼)	1300-1½ 1061 (1100-1½)	1300-3	1061 (1100-3)
CIRCLING	1300-1¼ 1061 (1100-1¼)	1300-1½ 1061 (1100-1½)	1300-3	1061 (1100-3)

REIL Rwy 18 and 36
MIRL Rwy 18-36 **📻**