

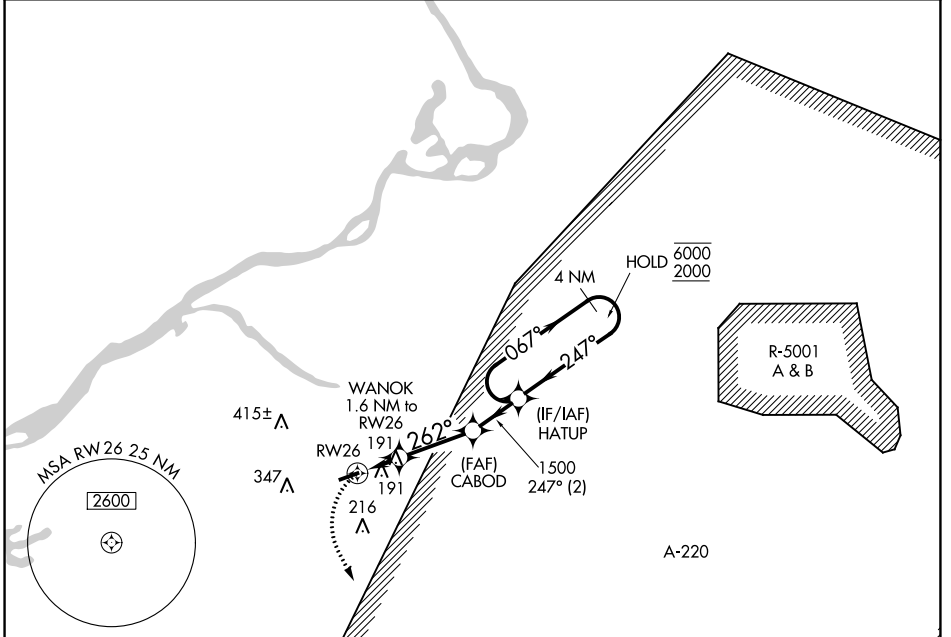
APP CRS	Rwy Idg	3881
262°	TDZE	53
	Apt Elev	53

RNAV (GPS) RWY 26

SOUTH JERSEY RGNL (VAY)

RNP APCH.		MISSED APPROACH: Climbing left turn to 2000 direct INNEZ and hold.	
Rwy 26 helicopter visibility reduction below 1 SM NA. Procedure NA at night.			

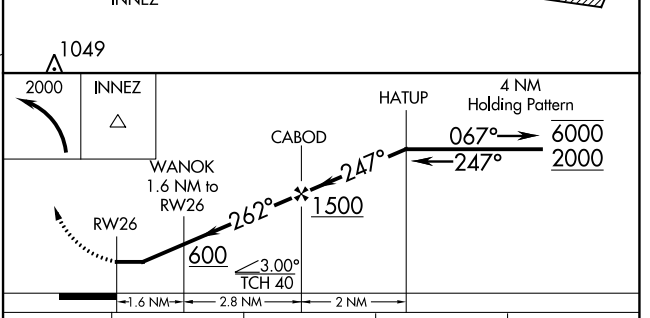
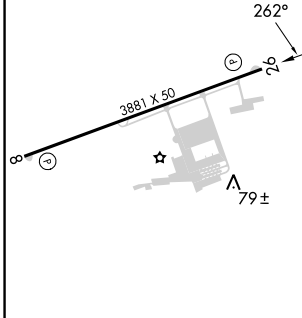
ASOS	MC GUIRE APP CON	UNICOM	123.3
119.325	126.475 363.8	122.8 (CTAF)	



NE-2, 05 SEP 2024 to 03 OCT 2024

NE-2, 05 SEP 2024 to 03 OCT 2024

ELEV 53	TDZE 53
---------	---------



MIRL Rwy 8-26			
REIL Rwy 8 and 26			
CATEGORY	A	B	C D
LNAV MDA	480-1	427 (500-1)	NA
CIRCLING	520-1	540-1	NA
	467 (500-1)	487 (500-1)	