

WAAS CH 53741 W30A	APP CRS 307°	Rwy Idg TDZE 262 Apt Elev 273	4553
--	------------------------	---	-------------

RNAV (GPS) RWY 30

BEEVILLE MUNI (BEA)

RNP APCH.

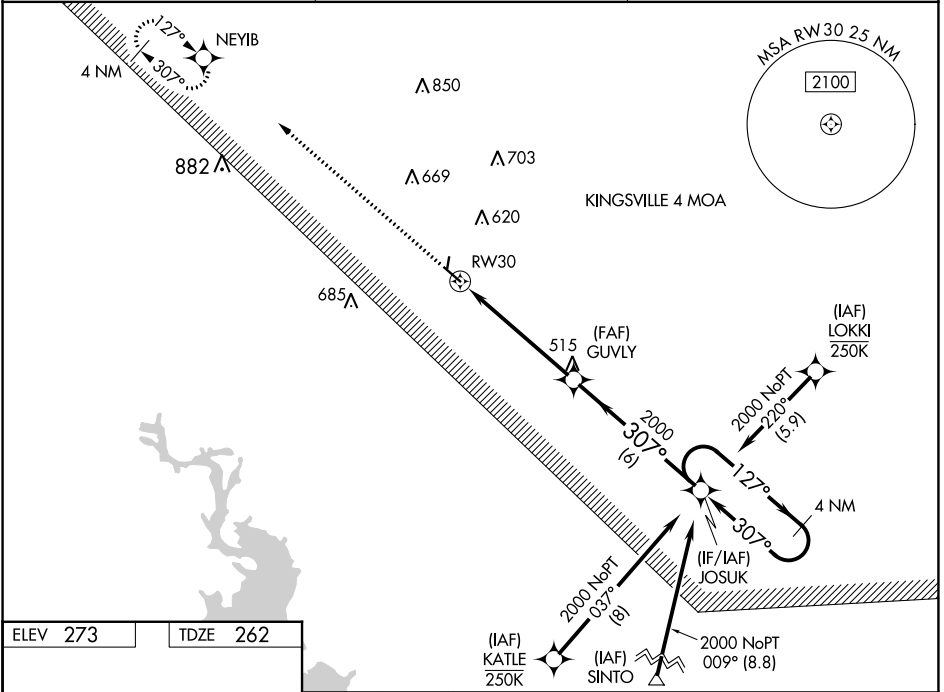
▼ For uncompensated Baro-VNAV systems, LNAV/VNAV NA below -15°C (5°F) or above 54°C (130°F). Circling Rwy 18 and 36 NA at night.
▲ Rwy 30 helicopter visibility reduction below ¾ SM NA.

MISSED APPROACH: Climb to 2000 direct NEYIB and hold.

AWOS-3
118.675

HOUSTON CENTER
134.6 322.5

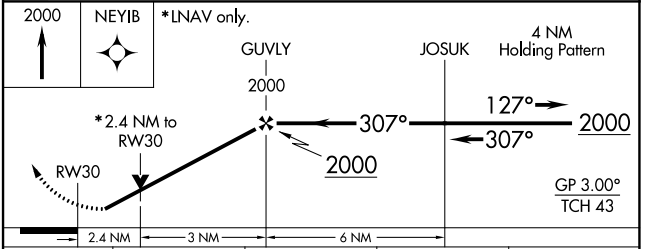
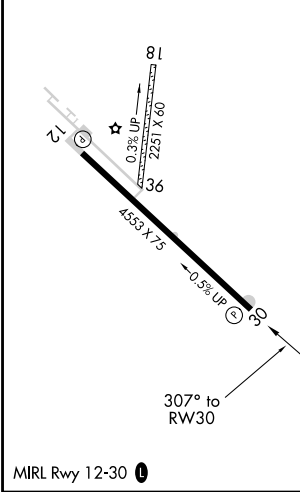
UNICOM
122.8 (CTAF) 0



SC-3, 05 SEP 2024 to 03 OCT 2024

SC-3, 05 SEP 2024 to 03 OCT 2024

ELEV 273	TDZE 262
----------	----------



CATEGORY	A	B	C	D
LPV DA	517-1	255 (300-1)		NA
LNAV/VNAV DA	540-1	278 (300-1)		NA
LNAV MDA	1060-1 798 (800-1)	1060-1¼ 798 (800-1¼)	1060-2½ 798 (800-2½)	NA
C CIRCLING	1060-1 787 (800-1)	1060-1¼ 787 (800-1¼)	1060-2½ 787 (800-2½)	NA