

VORTAC THX 111.4 Chan 51	APP CRS 106°	Rwy Idg TDZE 268 Apt Elev 273	4553
--	------------------------	---	-------------

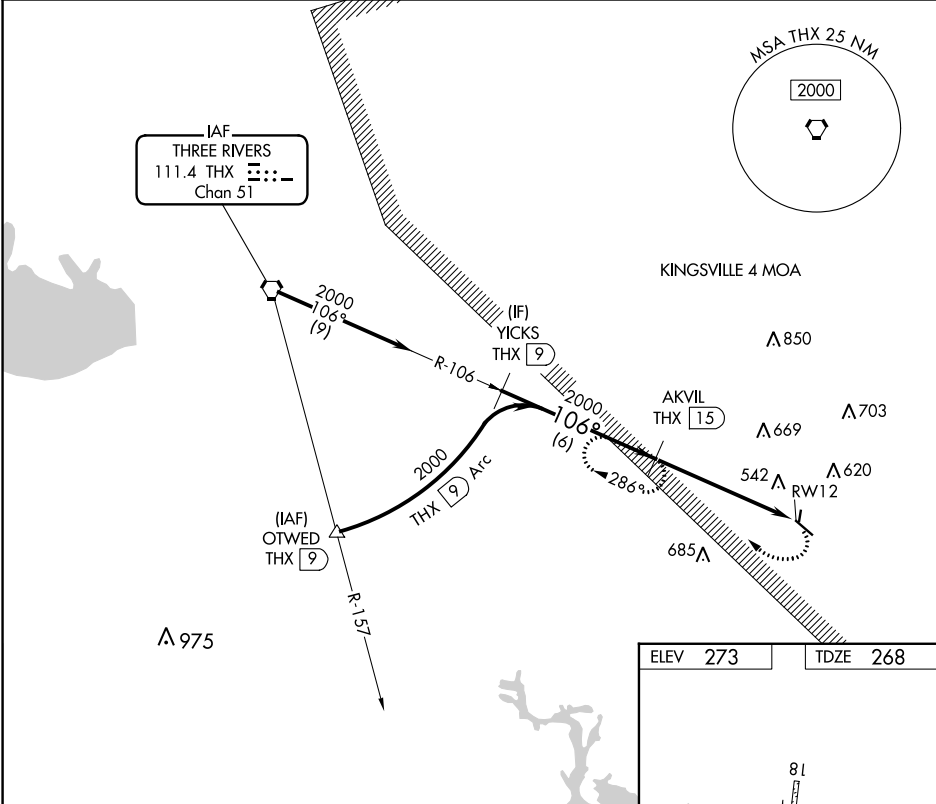
VOR/DME RWY 12

BEEVILLE MUNI (B.E.A)

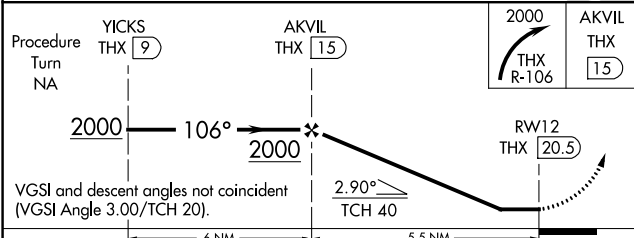
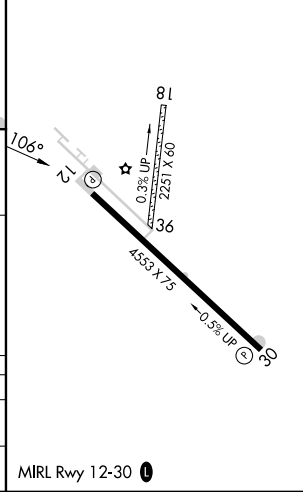
▼ Use Corpus Christi Intl altimeter setting.
▲ NA Circling NA to Rwys 18 and 36.

MISSED APPROACH: Climbing right turn to 2000 via THX VORTAC R-106 to AKVIL/THX VORTAC 15 DME and hold. Continue climb-in-hold to 2000.

AWOS-3 118.675	HOUSTON CENTER 134.6 322.5	UNICOM 122.8 (CTAF) 0
--------------------------	--------------------------------------	--



ELEV 273	TDZE 268
-----------------	-----------------



CATEGORY	A	B	C	D
S-12	1000-1 732 (800-1)	1000-1¼ 732 (800-1¼)	1000-2 732 (800-2)	NA
C CIRCLING	1000-1 727 (800-1)	1020-1¼ 747 (800-1¼)	1120-2½ 847 (900-2½)	NA

SC-3, 05 SEP 2024 to 03 OCT 2024

SC-3, 05 SEP 2024 to 03 OCT 2024