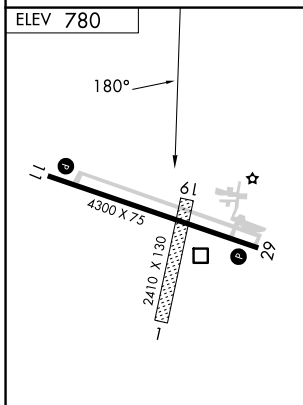
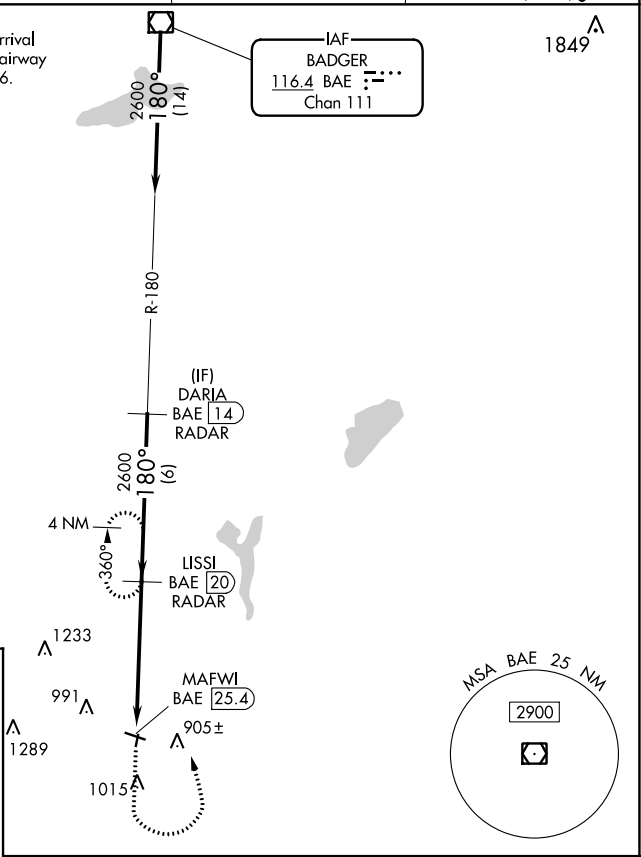


VOR/DME BAE	APP CRS	Rwy Idg	N/A
116.4	180°	TDZE	N/A
Chan 111		Apt Elev	780

VOR-A
BURLINGTON MUNI (BUU)

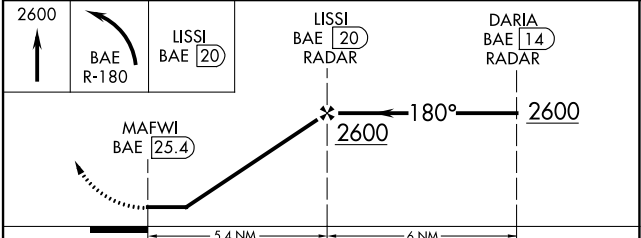
DME or RADAR required.		MISSED APPROACH: Climb to 2600 then left turn on BAE VOR/DME R-180 to LISSI/20 DME/RADAR and hold.	
Circling NA to Rwys 1 and 19.		AWOS-3 125.275	MILWAUKEE APP CON 135.875 307.0
		GCO 121.725	UNICOM 123.05 (CTAF) 0

Procedure NA for arrival on BAE VOR/DME airway radials 119 CW 226.



MIRL Rwy 11-29
REIL Rwys 11 and 29

FAF to MAP	5.4 NM				
Knots	60	90	120	150	180
Min:Sec	5:24	3:36	2:42	2:10	1:48



CATEGORY	A	B	C	D
CIRCLING	1400-1	620 (700-1)	1400-1 3/4 620 (700-1 3/4)	1560-2 1/2 780 (800-2 1/2)

EC-3, 05 SEP 2024 to 03 OCT 2024

EC-3, 05 SEP 2024 to 03 OCT 2024